

PREFACE

This is the second publication providing results from the most recent Population Census of 1996. This bulletin will provide information on the H-Series or the Household characteristics. The statistics and information contained in this Report will assist planners, policy makers and researchers gain some insight into the structure of the Tongan household as well as important characteristics of Tongan households. Other volumes produced from results of the 1996 Census include the General or Main Census Report, the Internal Migration Report and the Demographic Analysis Report.

This report contains two parts: Part I gives the Administrative Report and Part II gives the Statistical Tables. The administrative part concentrates on general information about households and highlights the main findings of the Census. Part 2 gives the Statistical Tables.

This Report was prepared by the undersigned with the assistance of Mrs Mele P. Finau, Principal Statistician.

The Department would welcome any comments or queries concerning the statistics and information contained in this Report.

Mrs Seini M. Filiai
ACTING GOVERNMENT STATISTICIAN

TABLE OF CONTENTS

		Page No.
	PREFACE	i
	TABLE OF CONTENTS	ii
PART I	ADMINISTRATIVE REPORT	
1	INTRODUCTION	1
2	MAIN FINDINGS	
2.1	Number of households in Tonga	2
2.2	Number of households by ethnicity and gender of head of household, 1986 & 1996	3
2.3	Structure of households	5
2.4	Type of buildings	5
2.5	Source of water	6
2.6	Types of latrine	7
2.7	Source of energy for lighting	8
2.8	Source of energy for cooking	9
2.9	House tenure	10
2.10	Livestock	10
2.11	Household Assets	11
2.12	Households by crops grown during year 1996	12
2.13	Household waste disposal	13

PART II STATISTICAL TABLES

Table H1	Number of households by household size by sex and ethnicity of head of household for divisions, Nuku'alofa and Greater Nuku'alofa	1-3
Table H2	Structure of households headed by Tongans (including Part-Tongans) by sex and by number of sons and daughters	4
Table H3	Number of households headed by Tongans (including Part-Tongans) by age and sex of head of household by division, Nuku'alofa and Greater Nuku'alofa	5
Table H4	Number of households by division, district and by type of building	6
Table H5	Number of households by source of water and type of latrine available in households by district and division	7
Table H6	Number of households by source of energy for lighting and source of energy for cooking available in household by district and division	8
Table H7	Number of households headed by Tongans (including Part-Tongans) by sex of head of household by tenure of house by type of building for Tonga and Greater Nuku'alofa	9
Table H8	Number of households headed by Tongans (including Part-Tongans) by sex of head of household by type of latrine by source of water for Tonga and Greater Nuku'alofa	10
Table H9	Number of households headed by Tongans (including Part-Tongans) by sex of head of household by source of energy for lighting by source of energy for cooking for Tonga and Greater Nuku'alofa	11
Table H10	Number of households headed by Tongans (including Part-Tongans) by household asset by sex of head of household for divisions, Nuku'alofa and Greater Nuku'alofa	12
Table H11	Number of households headed by Tongans (including Part-Tongans) by livestock by sex of head of household for divisions, Nuku'alofa and Greater Nuku'alofa	13
Table H12	Number of households headed by Tongans (including Part-Tongans) by sex of head of household by crops grown in year 1996 by division and district	14
Table H13	Number of households headed by Tongans (including Part-Tongans) by sex of head of household by method of waste disposal for divisions and districts	15

1. INTRODUCTION

The Census of 1996 collected a wealth of information on the population and characteristics of households including population structure, relationship of household members to the head of household, type of building, type of latrine, source of energy for lighting, source of energy for cooking, ownership of household assets, ownership of livestock, agricultural crops grown, house tenure and household waste disposal. The information on households is important for planning and decision making. Household information is also important for use as a sampling frame for various household surveys like a Household Income and Expenditure Survey, an Agricultural Census on a sample basis, a Fishing survey or a Labour Force Survey.

In the 1996 Census, a separate questionnaire was used to capture the characteristics of households. A special effort was made to keep the questions on household characteristics similar to those used in the 1986 Census for ease of comparison. However due to requests from major users, some questions asked in the 1986 Census were omitted and new questions were included in the 1996 Census. A major change in the 1996 Census included seeking information on **all** forms or types of utilities available in households compared to **main** utility requested in the 1986 Census. Questions on source of water, type of latrine, source of energy for lighting and source of energy for cooking required that households indicated all types used by each household. The 1996 Census omitted a washing machine from the list of household assets and included a computer. A new question on livestock was included in 1996 with the purpose of identifying households that owned livestock but not livestock population. Two other new questions on agricultural crops grown during 1996 and methods of household waste disposal were also included in the 1996 Census.

A household was defined in the 1996 Census as *“those persons who usually eat together and share the work of preparing the food and/or the cost of work of providing it”*. Normally household members also live and sleep in the same building but experience has shown this is not always the case which is why the definition is based on eating together rather than on living or sleeping in the same building. This definition of a household used in the 1996 Census was the same definition used in the 1986 Census.

2. FINDINGS

2.1 Number of Households in Tonga

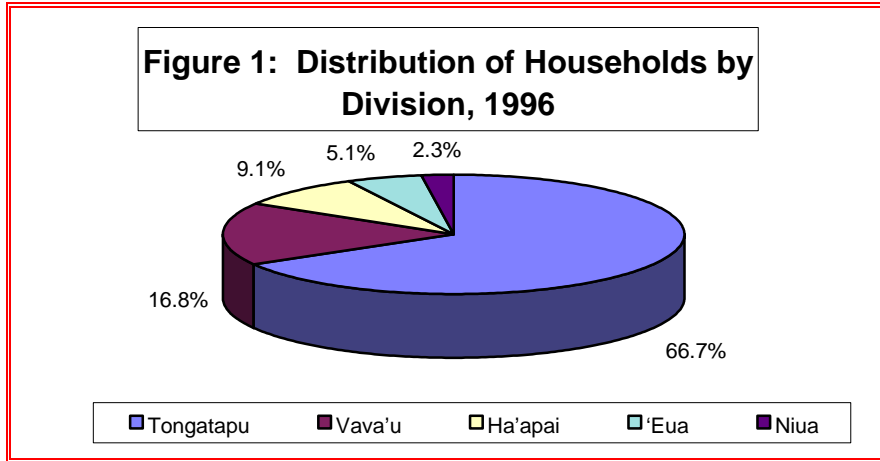
The Census of November 1996 counted a total of 16,194 households in the Kingdom of Tonga, an increase of 7.3 percent from 15,091 households recorded in 1986. Table 1 gives a comparison of the total number of households in 1986 and 1996 Censuses, total population, percentage distribution of households by division, and percentage change between 1986 and 1996 in number of households as well as the average household size for each Division.

There were new areas of settlement identified in 1996 and were assigned as new census blocks, mainly at Tongatapu, Vava'u and 'Eua. This is reflected in the increase of 11.0 percent in number of households recorded in Tongatapu, 7.1 percent in Vava'u and 3.8 percent in 'Eua, from the 1986 numbers. Population mobility has influenced the decrease in number of households recorded in Ha'apai and Niua where there were lesser households identified in 1996 than in 1986, a decrease of 9.0 percent and 8.4 percent respectively (see Table 1). It is noted that the increase of 7.3 percent in number of households and the 3.3 percent increase in population had the impact of reducing the average household size from 6.3 persons in 1986 to 6.0 persons in 1996. Tongatapu had an average household size of 6.2 persons, Vava'u had 5.8 persons, Ha'apai had 5.5 persons, 'Eua had 6 persons and the Niua had 5.3 persons.

Table 1: Total population, number of households, percentage distribution and average household size by Division, 1986 & 1996

Division	Population		No. households		Percent distribution of h/holds		Average h/hold size		percent change, no. of h/holds, 1986-1996
	1986	1996	1986	1996	1986	1996	1986	1996	
Tongatapu	63,794	66,979	9,723	10,796	64.4	66.7	6.6	6.2	11.0
Vava'u	15,175	15,715	2,547	2,728	16.9	16.8	6.0	5.8	7.1
Ha'apai	8,919	8,138	1,615	1,469	10.7	9.1	5.5	5.5	-9.0
'Eua	4,393	4,934	790	820	5.2	5.1	5.6	6.0	3.8
Niua	2,368	2,018	416	381	2.8	2.3	5.7	5.3	-8.4
TOTAL	94,649	97,784	15,091	16,194	100.0	100.0	6.3	6.0	7.3

Tongatapu Division had almost 67 percent of all households followed by Vava'u with almost 17 percent, Ha'apai had 9.1 percent, 'Eua had 5.1 percent and the Niua had only 2.3 percent of all households. Figure 1 gives a graphical representation of the number of households in each Division. The total number of households went up by 7.3 percent from 15,091 in 1986 to 16,194 in 1996, while total population over the ten year period went up by 3.3 percent.



2.2 Number of households by ethnicity and gender of head of household, 1986 & 1996

Tonga is a paternal society where males headed a majority of the households ie 13,095 or 81 percent of all households while females headed only 3,099 or 19 percent of households. Table 2 gives a detailed breakdown of households by ethnicity of head of household as well as gender of head of household. There was a significant increase in the number of households headed by males, an increase of almost 61 percent from 8,137 in 1986 to 13,095 in 1996. There was also a significant decrease of 55.4 percent in the number of households headed by females, from 6,954 in 1986 to only 3,099 in 1996. Almost 97 percent of households or 15,670 were headed by Tongans or part-Tongans and only 3 percent of households were headed by non-Tongans. The number of households headed by non-Tongans went up by 12.4 percent from 466 in 1986 to 524 in 1996.

Table 2: Number of Households by Ethnicity and Gender of Head of Household, 1986 & 1996

Ethnicity/Gender of Household Head	1986			1996			% Change 1986-1996		
	Male	Female	Total	Male	Female	Total	Male	Female	Total
Tongans (including Part-Tongans)	7,879	6,746	14,625	12,667	3,003	15,670	60.8	-55.5	7.1
Non-Tongans	258	208	466	428	96	524	65.9	-53.8	12.4
Total	8,137	6,954	15,091	13,095	3,099	16,194	60.9	-55.4	7.3
<u>% distribution</u>									
Tongans (including Part-Tongans)	96.8	97.0	96.9	96.7	96.9	96.8			
Non-Tongans	3.2	3.0	3.1	3.3	3.1	3.2			
Total	100.0	100.0	100.0	100.0	100.0	100.0			

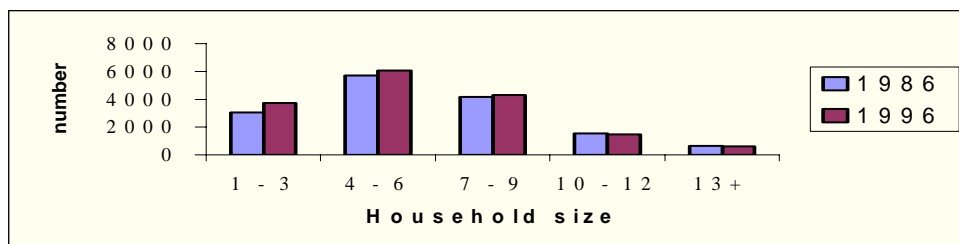
The Census of 1996 also collected information on household size or the number of persons in a household. Table 3 gives a breakdown of households by size and gender of head of household. The data indicates that 6,073 households or 37.5 percent had 4 to 6 persons, and 4,289 households or 26.5 percent had 7 to 9 persons. A similar picture is shown by households headed by males as well as households headed by females, with a majority of households consisting of 4 to 6 persons. Only 617 households or 3.8 percent had 13 or more persons and 3,734 or 23.1 percent had 1 to 3 persons.

Table 3: Number of Households by Size and Gender of Household Head, 1986 & 1996

Hld Size/Gender of Head	1986			1996			% Change 1986-1996		
	Male	Female	Total	Male	Female	Total	Male	Female	Total
1-3	1,653	1,406	3,059	2,837	897	3,734	71.6	-36.2	22.1
4-6	3,033	2,656	5,689	4,890	1,183	6,073	61.2	-55.5	6.7
7-9	2,270	1,899	4,169	3,609	680	4,289	59.0	-64.2	2.9
10-12	830	711	1,541	1,237	244	1,481	49.0	-65.7	-3.9
13+	351	282	633	522	95	617	48.7	-66.3	-2.5
Total	8,137	6,954	15,091	13,095	3,099	16,194	60.9	-55.4	7.3
<u>percent distribution</u>									
1-3	20.3	20.2	20.3	21.7	28.9	23.1			
4-6	37.3	38.2	37.7	37.3	38.2	37.5			
7-9	27.9	27.3	27.6	27.6	21.9	26.5			
10-12	10.2	10.2	10.2	9.4	7.9	9.1			
13+	4.3	4.1	4.2	4.0	3.1	3.8			
Total	100.0	100.0	100.0	100.0	100.0	100.0			

Table 3 indicates a 22.1 percent growth in households of size 1-3 persons from 3,059 in 1986 to 3,734 in 1996. The number of households of size 4-6 persons went up by 6.7 percent and households of size 7-9 persons went up by 2.9 percent. Households of size 10 persons or more showed a decrease in 1996 from the numbers recorded in 1986. Figure 2 gives a comparison of the size of households in 1986 and 1996

Figure 2: Household size 1986 and 1996



2.3 Structure of households

The structure of a household shows the relationship of household members to the head of household. The majority of households headed by Tongans (including Part-Tongans) or 46.7 percent consisted of a father, spouse and their children. About 21 percent of households had the household head and other members in the household but no children, and 13.6 percent had the household head living with his/her children but no spouse. Table 4 gives details of household structure in 1986 and 1996.

Table 4: Structure of households headed by Tongans (including Part-Tongans) by sex of head of household, 1986 & 1996

Household structure	1986			1996		
	Male	Female	Total	Male	Female	Total
Head with no sons/daughters present	2,002	564	2,566	2,499	723	3,222
Nuclear family present	8,229	57	8,286	7,277	47	7,324
Head with sons/daughters present	748	2,042	2,790	625	1,506	2,131
Others	731	252	983	2,266	727	2,993
TOTAL	11,710	2,915	14,625	12,667	3,003	15,670
<u>% Distribution</u>						
Head with no sons/daughters present	17.1	19.3	17.5	19.7	24.1	20.6
Nuclear family present	70.3	2.0	56.7	57.4	1.6	46.7
Head with sons/daughters present	6.4	70.1	19.1	4.9	50.1	13.6
Others	6.2	8.6	6.7	17.9	24.2	19.1
TOTAL	100.0	100.0	100.0	100.0	100.0	100.0

2.4 Type of Buildings

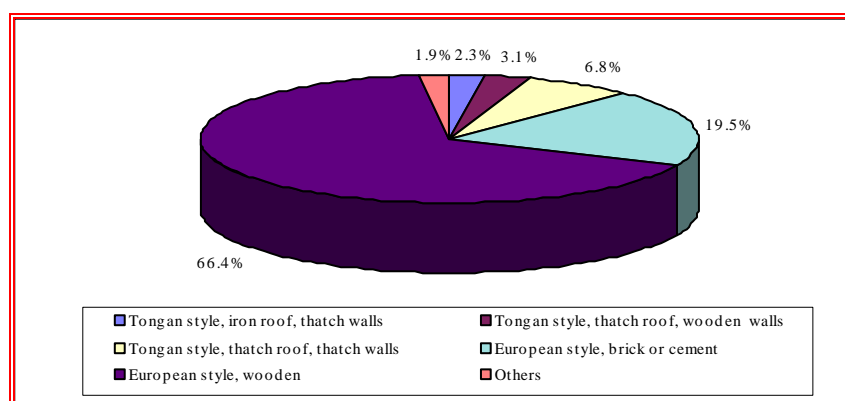
Census results showed that out of the total 16,194 households in Tonga, 10,760 or 66.4 percent lived in European type houses made of wood, 3,154 or 19.5 percent of households lived in European type houses made of bricks or cement, 1,110 households or 6.8 percent lived in Tongan styled houses with thatch roof and thatch walls, 502 or 3.1 percent of households lived in Tongan style houses with thatch roof and wooden walls, 365 or 2.3 percent of households had Tongan style houses with iron roof and thatch walls, and 303 or 1.9 percent of households had other types of houses not mentioned above. Details of the number of households by type of building is given in Table 5.

Table 5: Number and Percentage of Households by type of Building, 1986 & 1996

Type of building/No. & % Hlds	1986		1996		% change
	No. Households	% of Hlds	No. Households	% of Hlds	
Tongan style, iron roof, thatch walls	1,126	7.5	365	2.3	-67.6
Tongan style, thatch roof, wooden walls	631	4.2	502	3.1	-20.4
Tongan style, thatch roof, thatch walls	1,111	7.4	1,110	6.8	-0.1
European style, brick or cement	2,600	17.2	3,154	19.5	21.3
European style, wooden	9,089	60.2	10,760	66.4	18.4
Others	534	3.5	303	1.9	-43.3
TOTAL	15,091	100.0	16,194	100	7.3

There was a significant move in preference of building from Tongan styles to European styles. This is indicated by significant decreases in all types of Tongan houses and increases in the number of European styled houses from the numbers recorded in 1986. The distribution of households in 1996 by type of building is clearly illustrated in Figure 3.

Figure 3: Distribution of households in Tonga by type of building, 1996



2.5 Source of Water

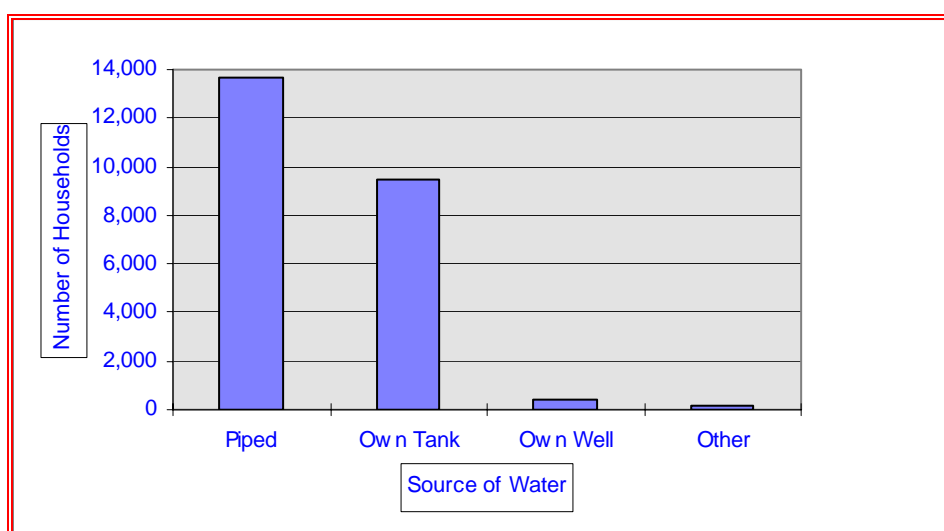
Out of the total of 16,194 households in Tonga, 13,705 or 84.6% of households had access to piped water supply; 9,444 or 58.3 percent of all households had their own water tank; 393 or 2.4 percent of households had their own well, and 175 or 1.1 percent had other sources of water supply than those mentioned above. It is possible for a household to have access to more than one source of water supply. For example, a household may have access to piped water as well as have its own water tank or well. Details of the number of households by source of water supply available to households in the Kingdom is given in Table 6.

Table 6: Number of households by source of water available to households, 1996

Source of Water	Number of Households
Piped	13,705
Own Tank	9,444
Own Well	393
Other	175

The distribution of households by source of water supply is clearly illustrated in Figure 4, showing that piped water is the main source of water for most households in the Kingdom.

Figure 4: Number of households by source of water supply, 1996



2.6 Types of Latrine

Information on types of latrine indicated that 9,033 households or 55.8 percent had a flush toilet, 5,799 or 35.8 percent of households had a pit toilet and 2,799 or 17.3 percent of households had a manual flush toilet. It is possible for a household to have more than one type of latrine. For example, a household may have a flush toilet as well as a pit or manual flush toilet. Details of latrine available in households by each division is given in Table 7.

Table 7: Number of Households by Type of Latrine by Division, 1996

Latrine Type/Division	Tongatapu	Vava'u	Ha'apai	'Eua	Niuas	Total
Flush	7,227	1,023	359	323	101	9,033
Manual	2,492	78	141	80	8	2,799
Pit	1,879	2,047	1,095	484	294	5,799
Other	41	7	3	2	0	53
None	50	16	6	11	9	92

2.7 Source of Energy for Lighting

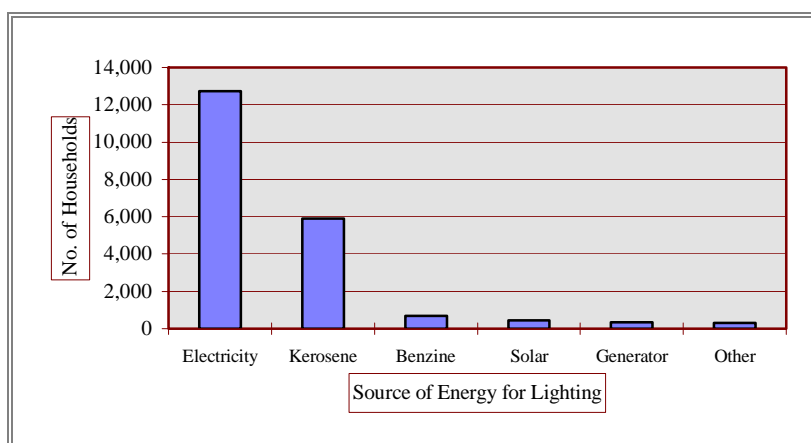
Information on source of energy used by households for lighting indicated that out of the total of 16,194 households in Tonga, 12,727 or 78.6 percent used electricity, 5,888 or 36.4 percent of households used kerosene, 673 or 4.2 percent of households used benzine, 430 or 2.7 percent of households used solar energy, 355 or 2.2 percent of households used their own power generator and 320 or 2.0 percent of households used other forms of energy not specified above. One household may have used two or more sources of energy. For example, a household may have used electricity as their principal source of energy for lighting and may occasionally use a benzine or kerosene lantern. The Census counted all sources of energy used by households for lighting. Details of the number of households using each source of energy for lighting is given in Table 8.

Table 8: Number of Households by source of Energy for Lighting, 1996

Source of Energy for Lighting	Number of Households
Electricity	12,727
Kerosene	5,888
Benzine	673
Solar	430
Generator	355
Other	320

The distribution of households by type of energy used for lighting is clearly illustrated in Figure 5, showing that electricity was the main source of energy for lighting used by most households in 1996.

Figure 5: Number of Households by source of energy for Lighting, 1996



2.8 Source of Energy for Cooking

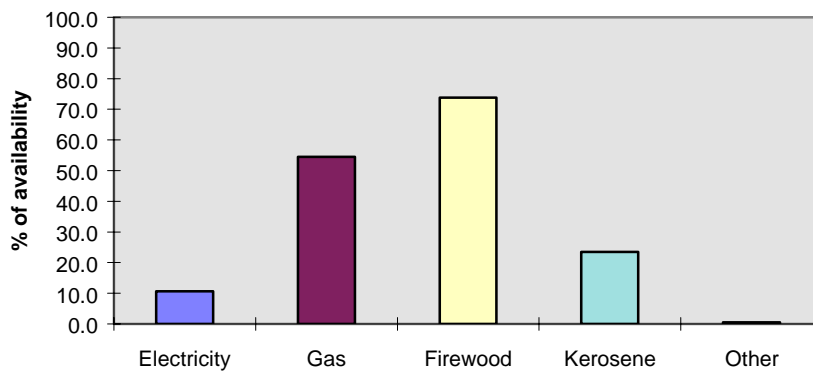
Information on the source of energy used by households for cooking indicated that out of the total of 16,194 households in Tonga, 11,947 households or 73.8 percent used firewood, 8,827 households or 54.5 percent used gas, 3,797 households or 23.4 percent used kerosene, 1,723 households or 10.6 percent used electricity and 87 households or 0.5 percent used other sources of energy not specified above. One household may have used two or more sources of energy for cooking. For example, a household may have used gas on rainy days and firewood on fine days and also on Sundays.

Table 9: Number of households by source of Energy for Cooking, 1996

Source of energy for cooking	No. of households	percent of availability
Electricity	1,723	10.6
Gas	8,827	54.5
Firewood	11,947	73.8
Kerosene	3,797	23.4
Other	87	0.5
TOTAL	16,194	100.0

The distribution of households by source of energy used for cooking is clearly illustrated in Figure 6.

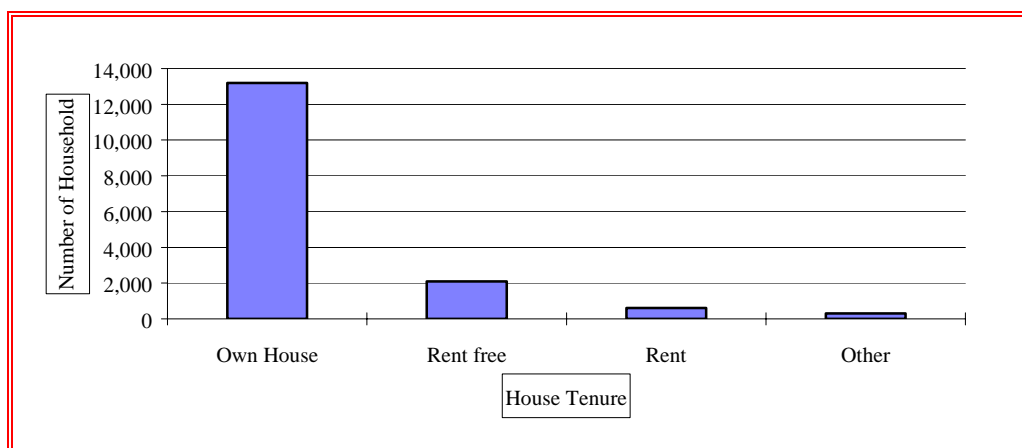
Figure 6: Percentage availability of source of energy for cooking, 1996



2.9 House Tenure

House Tenure refers to the form of right or title under which a house or building is held by the household. The results indicated that out of a total of 16,194 households in Tonga, 13,187 or 81.4 percent owned their houses, 2,090 households or 12.9 percent lived in houses that did not belong to them but were provided free of charge, 614 households or 3.8 percent lived in houses that were rented, and 303 households or 1.9 percent had other tenure arrangements. The distribution of households by tenureship of house is clearly illustrated in Figure 7.

Figure 7: Number of households by House Tenure, 1996

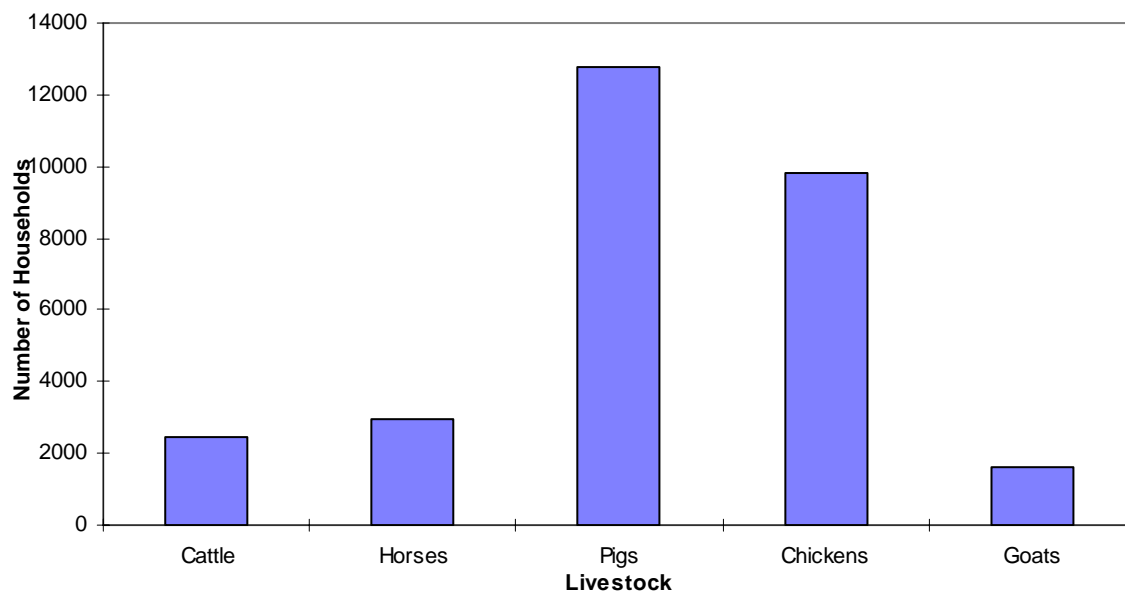


2.10 Livestock

Households were asked to indicate whether they had any cattle, horses, pigs, chickens or goats. Households were not asked to indicate how many livestock they had but simply to indicate whether they had any. Out of a total of 15,670 households that were headed by Tongans or part-Tongans, 2,463 households indicated they had cattle, 2,931 households had horses, 12,764 indicated they had pigs, 9,795 indicated they had chickens, and 1,618 indicated they had some goats.

The number of households by livestock owned at the time of Census 1996 is clearly illustrated in Figure 8.

Figure 8: Number of households with type of livestock, 1996



2.11 Household Assets

Households were asked to indicate whether they had any of the following assets: radio, bicycle, boat, hot water, shower, motor vehicle, refrigerator, TV, video or computer. Table 10 gives the number of households headed by Tongans or part-Tongans that had any of these assets with comparable figures for 1986.

Table 10: Number of Households headed by Tongans or Part-Tongans by household asset, 1986 and 1996

Household assets	1986	1996	percent distribution	
			1986	1996
Radio	2,346	13,858	16.0	88.4
Bicycle	691	5,433	4.7	34.7
Boat	112	938	0.8	6.0
Hot water	111	807	0.8	5.1
Shower	1,305	13,259	8.9	84.6
Motor Vehicle	383	5,387	2.6	34.4
Refrigerator	618	7,459	4.2	47.6
Television	218	6,286	1.5	40.1
Video deck	294	5,633	2.0	35.9
Washing Machine	521	na	3.6	-
Computer	-	225		1.4
Total households	14,625	15,670	100.0	100.0

There was a significant increase in the number of households that owned each household asset in 1986 when compared to 1996. In 1986, a washing machine was included in the list of assets but not included in 1996, and a computer was included in 1996 but not in 1986.

2.12 Households by crops grown during year 1996

The 1996 Census introduced a new question on crops grown by households during year 1996. A total of 69.4 percent of households had grown some agricultural crops during year 1996, and a relatively high percentage 22.9 of households indicated they had not grown any agricultural crops in 1996. Only 0.4 percent of total households had grown squash only and 7.4 percent had grown squash and other crops. Details of crops grown by division is given in Table 11.

Table 11: Number of Households headed by Tongans or part-Tongans by crops grown by division during year 1996

Crops grown during 1996	Tongatapu	Vava'u	Ha'apai	'Eua	Niuas	Total
Crops (no squash)	6,393	2,178	1,291	654	357	10,873
Squash only	46	9	1	1	-	57
Squash and crops	991	83	1	80	-	1,155
No crops grown	2,942	388	155	77	23	3,585
TOTAL	10,372	2,658	1,448	812	380	15,670
% Distribution						
Crops (no squash)	61.6	81.9	89.2	80.5	93.9	69.4
Squash only	0.4	0.3	0.1	0.1	0.0	0.4
Squash and crops	9.6	3.1	0.1	9.9	0.0	7.4
No crops grown	28.4	14.6	10.7	9.5	6.1	22.9
TOTAL	100.0	100.0	100.0	100.0	100.0	100.0

2.13 Household waste disposal

Information on household waste disposal indicated that most households or 87.7 percent of total households headed by Tongans or part-Tongans dispose their household waste by burning; 4.3 percent of households bury their household waste and 0.7 percent throw their household waste in the lagoon or ocean. A further 7.3 percent of households indicated they disposed their household waste by other methods, with a majority of households in the Greater Nuku'alofa area having their household waste collected on a regular basis by the Ministry of Health. Table 12 gives details of the number of households headed by Tongans or part-Tongans by method of household waste disposal in each Division.

Table 12: Number of Households headed by Tongans or part-Tongans by household waste disposal, 1996

Household waste disposal	Tongatapu	Vava'u	Ha'apai	'Eua	Niuas	Total
Burn	8,735	2,528	1,336	798	351	13,748
Bury	459	79	104	6	25	673
Lagoon/Ocean	95	12	-	2	1	110
Others	1,083	39	8	6	3	1,139
TOTAL	10,372	2,658	1,448	812	380	15,670
% distribution						
Burn	84.2	95.1	92.3	98.3	92.4	87.7
Bury	4.4	3.0	7.2	0.7	6.6	4.3
Lagoon/Ocean	0.9	0.5	0.0	0.2	0.3	0.7
Others	10.4	1.5	0.6	0.7	0.8	7.3
TOTAL	100.0	100.0	100.0	100.0	100.0	100.0

Table H1: Number of households by household size by sex and ethnicity of head of household for divisions, Nuku'alofa and Greater Nuku'alofa, 1996

Division/ Household size	Total household			Tongans			Part-Tongans			Non-Tongans		
	Total	male	female	Total	male	female	Total	male	female	Total	male	female
TONGA												
Total	16,194	13,095	3,099	15,414	12,466	2,948	256	201	55	524	428	96
1	912	698	214	769	604	165	19	10	9	124	84	40
2	1,263	930	333	1,122	812	310	28	20	8	113	98	15
3	1,569	1,219	350	1,472	1,141	331	26	18	8	71	60	11
4	1,972	1,573	399	1,862	1,479	383	29	24	5	81	70	11
5	2,054	1,652	402	1,972	1,584	388	28	19	9	54	49	5
6	2,050	1,672	378	1,979	1,614	365	34	27	7	37	31	6
7	1,809	1,516	293	1,767	1,479	288	26	24	2	16	13	3
8	1,421	1,187	234	1,396	1,170	226	17	12	5	8	5	3
9	1,050	896	154	1,034	880	154	10	10	-	6	6	-
10	737	614	123	720	598	122	13	12	1	4	4	-
11	446	371	75	431	357	74	10	10	-	5	4	1
12	296	248	48	288	240	48	6	6	-	2	2	-
13	220	184	36	216	180	36	3	3	-	1	1	-
14	130	112	18	128	111	17	1	1	-	1	-	1
15+	265	223	42	258	217	41	6	5	1	1	1	-
Tongatapu												
Total	10,796	8,597	2,199	10,172	8,089	2,083	200	158	42	424	350	74
1	547	411	136	440	338	102	15	7	8	92	66	26
2	788	576	212	673	479	194	21	16	5	94	81	13
3	997	769	228	916	701	215	20	15	5	61	53	8
4	1,286	997	289	1,196	920	276	21	18	3	69	59	10
5	1,344	1,069	275	1,278	1,015	263	25	17	8	41	37	4
6	1,387	1,117	270	1,326	1,068	258	30	24	6	31	25	6
7	1,222	994	228	1,192	968	224	16	14	2	14	12	2
8	986	802	184	964	787	177	15	11	4	7	4	3
9	735	625	110	724	614	110	7	7	-	4	4	-
10	520	424	96	507	412	95	10	9	1	3	3	-
11	305	249	56	294	239	55	7	7	-	4	3	1
12	218	180	38	210	172	38	6	6	-	2	2	-
13	166	135	31	164	133	31	2	2	-	-	-	-
14	96	81	15	94	80	14	1	1	-	1	-	1
15+	199	168	31	194	163	31	4	4	-	1	1	-
Vava'u												
Total	2,728	2,244	484	2,614	2,153	461	44	36	8	70	55	15
1	169	136	33	144	120	24	3	3	-	22	13	9
2	230	165	65	209	149	60	6	3	3	15	13	2
3	295	225	70	282	217	65	5	3	2	8	5	3
4	334	275	59	319	262	57	7	5	2	8	8	-
5	349	287	62	338	276	62	2	2	-	9	9	-
6	341	283	58	337	279	58	1	1	-	3	3	-
7	315	275	40	305	266	39	8	8	-	2	1	1
8	225	198	27	223	197	26	2	1	1	-	-	-
9	174	147	27	171	144	27	3	3	-	-	-	-
10	122	103	19	119	100	19	2	2	-	1	1	-
11	69	58	11	65	54	11	3	3	-	1	1	-
12	40	34	6	40	34	6	-	-	-	-	-	-
13	20	19	1	18	17	1	1	1	-	1	1	-
14	20	17	3	20	17	3	-	-	-	-	-	-
15+	25	22	3	24	21	3	1	1	-	-	-	-

Table H1: Number of households by household size by sex and ethnicity of head of household for divisions, Nuku'alofa and Greater Nuku'alofa, 1996

Division/ Household size	Total household			Tongans			Part-Tongans			Non-Tongans		
	Total	male	female	Total	male	female	Total	male	female	Total	male	female
Ha'apai												
Total	1,469	1,199	270	1,443	1,179	264	5	4	1	21	16	5
1	123	87	36	115	82	33	-	-	-	8	5	3
2	145	106	39	142	103	39	1	1	-	2	2	-
3	156	120	36	154	118	36	-	-	-	2	2	-
4	203	163	40	199	160	39	1	1	-	3	2	1
5	186	148	38	183	146	37	-	-	-	3	2	1
6	169	148	21	167	146	21	1	1	-	1	1	-
7	152	141	11	151	140	11	1	1	-	-	-	-
8	99	85	14	98	84	14	-	-	-	1	1	-
9	84	72	12	83	71	12	-	-	-	1	1	-
10	43	39	4	43	39	4	-	-	-	-	-	-
11	34	28	6	34	28	6	-	-	-	-	-	-
12	23	20	3	23	20	3	-	-	-	-	-	-
13	20	17	3	20	17	3	-	-	-	-	-	-
14	9	9	-	9	9	-	-	-	-	-	-	-
15+	23	16	7	22	16	6	1	-	1	-	-	-
Eua												
Total	820	711	109	805	702	103	7	3	4	8	6	2
1	34	27	7	31	27	4	1	-	1	2	-	2
2	66	53	13	64	51	13	-	-	-	2	2	-
3	91	79	12	90	79	11	1	-	1	-	-	-
4	93	86	7	92	85	7	-	-	-	1	1	-
5	120	98	22	118	97	21	1	-	1	1	1	-
6	99	78	21	96	76	20	2	1	1	1	1	-
7	85	76	9	84	75	9	1	1	-	-	-	-
8	82	74	8	82	74	8	-	-	-	-	-	-
9	40	37	3	39	36	3	-	-	-	1	1	-
10	39	36	3	38	35	3	1	1	-	-	-	-
11	31	30	1	31	30	1	-	-	-	-	-	-
12	9	8	1	9	8	1	-	-	-	-	-	-
13	11	10	1	11	10	1	-	-	-	-	-	-
14	5	5	-	5	5	-	-	-	-	-	-	-
15+	15	14	1	15	14	1	-	-	-	-	-	-
Niuas												
Total	381	344	37	380	343	37	-	-	-	1	1	-
1	39	37	2	39	37	2	-	-	-	-	-	-
2	34	30	4	34	30	4	-	-	-	-	-	-
3	30	26	4	30	26	4	-	-	-	-	-	-
4	56	52	4	56	52	4	-	-	-	-	-	-
5	55	50	5	55	50	5	-	-	-	-	-	-
6	54	46	8	53	45	8	-	-	-	1	1	-
7	35	30	5	35	30	5	-	-	-	-	-	-
8	29	28	1	29	28	1	-	-	-	-	-	-
9	17	15	2	17	15	2	-	-	-	-	-	-
10	13	12	1	13	12	1	-	-	-	-	-	-
11	7	6	1	7	6	1	-	-	-	-	-	-
12	6	6	-	6	6	-	-	-	-	-	-	-
13	3	3	-	3	3	-	-	-	-	-	-	-
14	-	-	-	-	-	-	-	-	-	-	-	-
15+	3	3	-	3	3	-	-	-	-	-	-	-

Table H1: Number of households by household size by sex and ethnicity of head of household for divisions, Nuku'alofa and Greater Nuku'alofa, 1996

Division/ Household size	Total household			Tongans			Part-Tongans			Non-Tongans		
	Total	male	female	Total	male	female	Total	male	female	Total	male	female
<u>Nuku'alofa</u>												
<u>Total</u>	<u>3,665</u>	<u>2,832</u>	<u>833</u>	<u>3,293</u>	<u>2,528</u>	<u>765</u>	<u>93</u>	<u>74</u>	<u>19</u>	<u>279</u>	<u>230</u>	<u>49</u>
1	241	176	65	159	122	37	9	4	5	73	50	23
2	289	205	84	217	145	72	12	8	4	60	52	8
3	341	257	84	284	208	76	12	10	2	45	39	6
4	420	321	99	366	274	92	9	8	1	45	39	6
5	456	350	106	417	320	97	15	9	6	24	21	3
6	411	319	92	388	297	91	9	9	-	14	13	1
7	408	316	92	393	302	91	7	7	-	8	7	1
8	344	273	71	334	265	69	5	4	1	5	4	1
9	246	205	41	241	200	41	4	4	-	1	1	-
10	162	128	34	156	122	34	5	5	-	1	1	-
11	103	85	18	100	82	18	1	1	-	2	2	-
12	82	64	18	81	63	18	-	-	-	1	1	-
13	60	46	14	59	45	14	1	1	-	-	-	-
14	31	27	4	31	27	4	-	-	-	-	-	-
15+	71	60	11	67	56	11	4	4	-	-	-	-
<u>Greater Nuku'alofa</u>												
<u>Total</u>	<u>5,074</u>	<u>3,951</u>	<u>1,123</u>	<u>4,611</u>	<u>3,574</u>	<u>1,037</u>	<u>115</u>	<u>90</u>	<u>25</u>	<u>348</u>	<u>287</u>	<u>61</u>
1	305	222	83	210	159	51	11	4	7	84	59	25
2	393	277	116	298	197	101	16	12	4	79	68	11
3	458	348	110	392	291	101	12	10	2	54	47	7
4	583	440	143	518	386	132	10	8	2	55	46	9
5	654	512	142	605	473	132	18	11	7	31	28	3
6	599	469	130	568	442	126	12	10	2	19	17	2
7	563	448	115	542	429	113	9	9	-	12	10	2
8	457	368	89	445	359	86	6	5	1	6	4	2
9	338	279	59	329	270	59	6	6	-	3	3	-
10	231	187	44	224	180	44	5	5	-	2	2	-
11	156	128	28	151	123	28	3	3	-	2	2	-
12	107	85	22	105	83	22	1	1	-	1	1	-
13	80	64	16	79	63	16	1	1	-	-	-	-
14	52	43	9	51	42	9	1	1	-	-	-	-
15+	98	81	17	94	77	17	4	4	-	-	-	-

Table H2: Structure of Households headed by Tongans (including Part-Tongans) by sex and by number of sons and daughters, 1996

Household Structure/Sex	Total Households	Number of sons and daughters								
		0	1	2	3	4	5	6	7	8+
TONGA	15,670	3,222	2,790	2,520	2,268	1,836	1,355	872	452	355
Male	12,667	2,499	2,139	1,973	1,867	1,560	1,163	758	398	310
Female	3,003	723	651	547	401	276	192	114	54	45
Household with no sons and daughters	3,222	3,222	-	-	-	-	-	-	-	-
Male	2,499	2,499	-	-	-	-	-	-	-	-
Female	723	723	-	-	-	-	-	-	-	-
Head only	979	-	269	190	174	138	94	62	31	21
Male	320	-	126	67	51	29	20	14	9	4
Female	659	-	143	123	123	109	74	48	22	17
Head and spouse only	4,288	-	639	791	782	733	588	380	208	167
Male	4,259	-	637	784	777	727	583	378	206	167
Female	29	-	2	7	5	6	5	2	2	-
Head, spouse and parents only	116	-	11	20	31	13	14	16	7	4
Male	114	-	11	19	30	13	14	16	7	4
Female	2	-	-	1	1	-	-	-	-	-
Head and parents only	37	-	8	6	6	8	5	4	-	-
Male	9	-	4	1	2	2	-	-	-	-
Female	28	-	4	5	4	6	5	4	-	-
Head, spouse and grandchildren only	652	-	209	132	116	73	52	41	14	15
Male	649	-	209	130	116	73	51	41	14	15
Female	3	-	-	2	-	-	1	-	-	-
Head and grandchildren only	488	-	216	125	72	31	23	9	8	4
Male	133	-	62	28	16	14	7	4	2	-
Female	355	-	154	97	56	17	16	5	6	4
Head, spouse, parents and grandchildren only	6	-	1	1	3	-	-	-	1	-
Male	5	-	1	1	2	-	-	-	1	-
Female	1	-	-	-	1	-	-	-	-	-
Head, parents and grandchildren only	12	-	2	6	1	1	-	2	-	-
Male	1	-	-	1	-	-	-	-	-	-
Female	11	-	2	5	1	1	-	2	-	-
Head, spouse and spouses of children only	53	-	11	4	10	7	8	5	4	4
Male	52	-	11	3	10	7	8	5	4	4
Female	1	-	-	1	-	-	-	-	-	-
Head and spouses of children only	34	-	10	8	6	3	2	3	1	1
Male	12	-	5	3	-	2	1	1	-	-
Female	22	-	5	5	6	1	1	2	1	1
Head, spouse and other relatives only	1,633	-	294	315	307	287	196	133	63	38
Male	1,624	-	291	313	305	285	196	133	63	38
Female	9	-	3	2	2	2	-	-	-	-
Head and other relatives only	473	-	128	93	83	78	37	27	14	13
Male	108	-	39	21	16	20	2	5	2	3
Female	365	-	89	72	67	58	35	22	12	10
Head, spouse and no relation only	576	-	104	109	114	105	68	34	20	22
Male	574	-	103	108	114	105	68	34	20	22
Female	2	-	1	1	-	-	-	-	-	-
Head and no relation only	108	-	30	23	20	15	7	6	2	5
Male	42	-	18	8	9	5	2	-	-	-
Female	66	-	12	15	11	10	5	6	2	5
Others	2,993	-	858	697	543	344	261	150	79	61
Male	2,266	-	622	486	419	278	211	127	70	53
Female	727	-	236	211	124	66	50	23	9	8

Table H3: Number of households headed by Tongans (including Part-Tongans) by age and sex of head of household by division, Nuku'alofa and Greater Nuku'alofa, 1996

Sex/Age group	Total	Tongatapu	Vava'u	Ha'apai	Eua	Niuas	Nuku'alofa	Greater Nuku'alofa
<u>TONGA</u>								
<u>Total</u>	<u>15670</u>	<u>10372</u>	<u>2658</u>	<u>1448</u>	<u>812</u>	<u>380</u>	<u>3386</u>	<u>4726</u>
Less than 5	0	0	0	0	0	0	0	0
5 to 9 years	1	1	0	0	0	0	1	1
10 to 14 years	4	3	1	0	0	0	2	2
15 to 19 years	58	43	9	4	2	0	16	23
20 to 24 years	388	268	61	34	22	3	101	134
25 to 29 years	1212	844	162	108	69	29	249	371
30 to 34 years	1593	1116	245	112	77	43	365	520
35 to 39 years	1610	1063	278	145	81	43	348	512
40 to 44 years	1668	1114	280	142	92	40	400	559
45 to 49 years	1572	1081	253	122	76	40	374	531
50 to 54 years	1650	1060	297	151	96	46	331	470
55 to 59 years	1639	1075	262	170	85	47	324	451
60 to 64 years	1451	922	262	161	69	37	297	397
65 to 69 years	1167	743	216	118	65	25	225	313
70 to 74 years	792	506	170	66	40	10	167	218
75 years and over	865	533	162	115	38	17	186	224
<u>Male</u>								
<u>Total</u>	<u>12667</u>	<u>8247</u>	<u>2189</u>	<u>1183</u>	<u>705</u>	<u>343</u>	<u>2602</u>	<u>3664</u>
Less than 5	0	0	0	0	0	0	0	0
5 to 9 years	0	0	0	0	0	0	0	0
10 to 14 years	3	2	1	0	0	0	2	2
15 to 19 years	49	38	7	2	2	0	13	19
20 to 24 years	326	220	51	32	20	3	77	106
25 to 29 years	1093	753	147	101	64	28	217	326
30 to 34 years	1434	987	229	103	73	42	317	454
35 to 39 years	1381	900	238	131	72	40	282	415
40 to 44 years	1392	919	238	121	78	36	313	446
45 to 49 years	1258	835	221	100	66	36	292	412
50 to 54 years	1290	800	246	123	80	41	249	348
55 to 59 years	1308	848	206	143	72	39	241	338
60 to 64 years	1115	691	211	120	60	33	206	282
65 to 69 years	868	542	165	85	54	22	157	222
70 to 74 years	578	364	127	44	34	9	118	154
75 years and over	572	348	102	78	30	14	118	140
<u>Female</u>								
<u>Total</u>	<u>3003</u>	<u>2125</u>	<u>469</u>	<u>265</u>	<u>107</u>	<u>37</u>	<u>784</u>	<u>1062</u>
Less than 5	0	0	0	0	0	0	0	0
5 to 9 years	1	1	0	0	0	0	1	1
10 to 14 years	1	1	0	0	0	0	0	0
15 to 19 years	9	5	2	2	0	0	3	4
20 to 24 years	62	48	10	2	2	0	24	28
25 to 29 years	119	91	15	7	5	1	32	45
30 to 34 years	159	129	16	9	4	1	48	66
35 to 39 years	229	163	40	14	9	3	66	97
40 to 44 years	276	195	42	21	14	4	87	113
45 to 49 years	314	246	32	22	10	4	82	119
50 to 54 years	360	260	51	28	16	5	82	122
55 to 59 years	331	227	56	27	13	8	83	113
60 to 64 years	336	231	51	41	9	4	91	115
65 to 69 years	299	201	51	33	11	3	68	91
70 to 74 years	214	142	43	22	6	1	49	64
75 years and over	293	185	60	37	8	3	68	84

Table H4: Number of households by division, district and village and by type of building, 1996

VILLAGE	Total	Tongan style, iron roof, thatch walls	Tongan style, thatch roof, wooden walls	Tongan style, thatch roof, thatch walls	European style, brick, cement	European style, wooden	Others
<u>TONGA</u>	<u>16,194</u>	<u>365</u>	<u>502</u>	<u>1,110</u>	<u>3,154</u>	<u>10,760</u>	<u>303</u>
<u>TONGATAPU DIVISION</u>	<u>10,796</u>	<u>209</u>	<u>317</u>	<u>610</u>	<u>2,125</u>	<u>7,377</u>	<u>158</u>
KOLOFO'OU DISTRICT	2,674	31	54	112	488	1,946	43
KOLOMOTU'A DISTRICT	2,400	43	72	130	458	1,667	30
VAINI DISTRICT	1,742	30	48	90	340	1,213	21
TATAKAMOTONGA DISTRICT	1,155	37	27	69	253	744	25
LAPAHA DISTRICT	1,172	36	49	107	286	671	23
NUKUNUKU DISTRICT	988	23	47	64	213	633	8
KOLOVAI DISTRICT	665	9	20	38	87	503	8
<u>VAVA'U DIVISION</u>	<u>2,728</u>	<u>83</u>	<u>91</u>	<u>201</u>	<u>602</u>	<u>1,667</u>	<u>84</u>
NEIAFU DISTRICT	1,016	27	41	46	252	618	32
PANGAIMOTU DISTRICT	212	2	10	21	77	101	1
HAHAKE DISTRICT	395	10	12	58	88	211	16
MOTU DISTRICT	259	5	4	21	39	177	13
<u>HA'APAI DIVISION</u>	<u>1,469</u>	<u>38</u>	<u>38</u>	<u>152</u>	<u>133</u>	<u>1,080</u>	<u>28</u>
PANGAI DISTRICT	501	14	16	18	76	369	8
FOA DISTRICT	244	8	3	34	32	161	6
LULUNGA DISTRICT	238	9	8	63	8	144	6
MU'OMU'A DISTRICT	150	6	3	13	5	122	1
HA'ANO DISTRICT	152	-	4	11	3	129	5
'UIHA DISTRICT	184	1	4	13	9	155	2
<u>'EUA DIVISION</u>	<u>820</u>	<u>22</u>	<u>37</u>	<u>80</u>	<u>179</u>	<u>491</u>	<u>11</u>
'EUA PROPER DISTRICT	455	12	18	26	67	326	6
'EUA FO'OU DISTRICT	365	10	19	54	112	165	5
<u>NIUAS DIVISION</u>	<u>381</u>	<u>13</u>	<u>19</u>	<u>67</u>	<u>115</u>	<u>145</u>	<u>22</u>
NIUATOPUTAPU DISTRICT	242	8	14	31	99	70	20
NIUAFO'OU DISTRICT	139	5	5	36	16	75	2

Table H5: Number of households by source of water and type of latrine available in the household by district and division, 1996

VILLAGE	Total Household	Source of Water				Type of Latrine				
		Piped	Own Tank	Own well	Other	Flush	Manual	Pit	None	Other
TONGA	16,194	13,705	9,444	393	175	9,033	2,799	5,799	92	53
TONGATAPU DIVISION	10,796	10,316	5,307	216	97	7,227	2,492	1,879	50	41
KOLOFO'OU DISTRICT	2,674	2,548	1,212	93	28	2,199	454	104	7	13
KOLOMOTU'A DISTRICT	2,400	2,340	983	31	12	1,789	589	148	9	6
VAINI DISTRICT	1,742	1,665	915	46	23	1,045	567	337	13	4
TATAKAMOTONGA DISTRICT	1,155	1,122	572	5	12	627	269	345	9	2
LAPAHA DISTRICT	1,172	1,096	594	22	18	565	330	372	5	12
NUKUNUKU DISTRICT	988	950	512	15	1	615	175	309	2	2
KOLOVAI DISTRICT	665	595	519	4	3	387	108	264	5	2
VAVA'U DIVISION	2,728	1,902	1,939	27	56	1,023	78	2,047	16	7
NEIAFU DISTRICT	1,016	851	618	6	17	631	53	516	2	3
PANGAIMOTU DISTRICT	212	100	127	8	18	37	4	190	6	-
HAHAKE DISTRICT	395	313	278	9	3	135	2	343	2	-
LEIMATU'A DISTRICT	474	369	355	1	5	97	12	437	1	-
HIHIFO DISTRICT	372	265	324	1	2	75	3	343	2	1
MOTU DISTRICT	259	4	237	2	11	48	4	218	3	3
HA'APAI DIVISION	1,469	666	1,355	145	6	359	141	1,095	6	3
PANGAI DISTRICT	501	342	449	52	4	275	101	215	1	-
FOA DISTRICT	244	216	216	3	1	47	9	213	1	-
LULUNGA DISTRICT	238	4	226	62	-	6	7	231	-	2
MU'OMU'A DISTRICT	150	3	144	6	-	3	6	140	-	1
HA'ANO DISTRICT	152	6	146	10	-	5	1	150	2	-
'UIHA DISTRICT	184	95	174	12	1	23	17	146	2	-
'EUA DIVISION	820	611	606	2	9	323	80	484	11	2
'EUA PROPER DISTRICT	455	333	301	-	7	181	57	239	8	2
'EUA FO'OU DISTRICT	365	278	305	2	2	142	23	245	3	-
NIUAS DIVISION	381	210	237	3	7	101	8	294	9	-
NIUATOPUTAPU DISTRICT	242	210	107	2	1	87	8	169	5	-
NIUAFO'OU DISTRICT	139	-	130	1	6	14	-	125	4	-

Table H6: Number of households by source of energy for lighting and source of energy for cooking available in households by district and division, 1996

VILLAGE	Total House hold	Source of energy for lighting						Source of energy for cooking				
		Elect-ricity	Gene-rator	Kero-sene	Ben-zine	Solar	Other	Elect-ricity	Gas	Fire wood	Kero-sene	Other
TONGA	16,194	12,727	355	5,888	673	430	320	1,723	8,827	11,947	3,797	87
TONGATAPU DIVISION	10,796	9,417	158	3,103	282	73	276	1,321	6,989	7,382	2,232	70
KOLOFO'OU DISTRICT	2,674	2,381	52	553	35	29	58	323	2,043	1,395	508	19
KOLOMOTU'A DISTRICT	2,400	2,200	23	470	25	27	40	247	1,769	1,472	565	10
VAINI DISTRICT	1,742	1,522	30	580	56	11	87	303	1,043	1,317	403	4
TATAKAMOTONGA DISTRICT	1,155	975	10	418	43	1	37	106	660	935	207	3
LAPAHA DISTRICT	1,172	953	11	447	41	2	43	138	488	953	192	19
NUKUNUKU DISTRICT	988	837	11	327	24	1	3	98	583	735	206	15
KOLOVAI DISTRICT	665	549	21	308	58	2	8	106	403	575	151	-
VAVA'U DIVISION	2,728	1,996	59	1,094	127	289	40	259	991	2,225	873	12
NEIAFU DISTRICT	1,016	858	26	223	21	58	21	150	537	709	285	4
PANGAIMOTU DISTRICT	212	137	5	111	21	-	-	10	50	204	73	3
HAHAKE DISTRICT	395	293	3	224	23	-	1	40	115	352	121	3
LEIMATU'A DISTRICT	474	405	3	209	18	1	17	42	131	384	167	-
HIHIFO DISTRICT	372	301	8	223	37	-	-	16	101	338	145	1
MOTU DISTRICT	259	2	14	104	7	230	1	1	57	238	82	1
HA'APAI DIVISION	1,469	650	104	979	155	46	1	66	514	1,238	372	4
PANGAI DISTRICT	501	459	1	166	11	-	1	56	306	361	69	1
FOA DISTRICT	244	191	2	128	11	-	-	10	82	220	51	1
LULUNGA DISTRICT	238	-	40	237	58	1	-	-	38	235	102	1
MU'OMU'A DISTRICT	150	-	12	131	9	13	-	-	33	95	29	-
HA'ANO DISTRICT	152	-	14	134	31	31	-	-	17	152	74	-
'UIHA DISTRICT	184	-	35	183	35	1	-	-	38	175	47	1
'EUA DIVISION	820	656	7	355	22	2	3	75	293	736	177	-
'EUA PROPER DISTRICT	455	370	5	171	9	1	3	25	160	403	113	-
'EUA FO'OU DISTRICT	365	286	2	184	13	1	-	50	133	333	64	-
NIUAS DIVISION	381	8	27	357	87	20	-	2	40	366	143	1
NIUATOPUTAPU DISTRICT	242	8	21	231	51	-	-	2	32	230	86	1
NIUAFO'OU DISTRICT	139	-	6	126	36	20	-	-	8	136	57	-

Table H7: Number of households headed by Tongans (including Part-Tongans) by sex of head of household by tenure of house by type of building for Tonga and Greater Nuku'alofa

Sex/House tenure	Total Household	Tongan style,	Tongan style,	Tongan style,	European	European	Others
		iron roof, thatch walls	thatch roof, wooden walls	thatch roof, thatch walls	style, brick, cement	style, wooden	
<u>TONGA</u>							
<u>Total</u>	15,670	360	485	1,089	2,977	10,479	280
Own House	13,052	328	404	945	2,388	8,771	216
Rented	341	3	11	9	124	190	4
Rent Free	1,996	26	64	124	404	1,335	43
Other	281	3	6	11	61	183	17
<u>Male</u>							
<u>Total</u>	12,667	306	410	925	2,394	8,385	247
Own House	10,468	281	340	798	1,906	6,952	191
Rented	264	3	6	7	102	143	3
Rent Free	1,694	19	58	111	339	1,131	36
Other	241	3	6	9	47	159	17
<u>Female</u>							
<u>Total</u>	3,003	54	75	164	583	2,094	33
Own House	2,584	47	64	147	482	1,819	25
Rented	77	-	5	2	22	47	1
Rent Free	302	7	6	13	65	204	7
Other	40	0	0	2	14	24	0
<u>Greater Nuku'alofa</u>							
<u>Total</u>	4,726	72	114	230	821	3,423	66
Own House	3,698	58	83	175	623	2,718	41
Rented	228	2	8	3	76	135	4
Rent Free	722	11	20	50	108	523	10
Other	78	1	3	2	14	47	11
<u>Male</u>							
<u>Total</u>	3,664	58	94	184	639	2,630	59
Own House	2,851	46	71	135	490	2,072	37
Rented	166	2	4	2	58	97	3
Rent Free	588	9	16	46	83	426	8
Other	59	1	3	1	8	35	11
<u>Female</u>							
<u>Total</u>	1,062	14	20	46	182	793	7
Own House	847	12	12	40	133	646	4
Rented	62	-	4	1	18	38	1
Rent Free	134	2	4	4	25	97	2
Other	19	-	-	1	6	12	-

Table H8: Number of households headed by Tongans (including Part-Tongans) by sex of head of household by type of latrine by source of water for Tonga and Greater Nuku'alofa

Sex/Type of latrine	Total household	Piped water	Tank water	Well water	Other
<u>TONGA</u>					
<u>Total</u>	15,670	13,240	9,156	386	159
Flush	8,554	8,257	5,414	105	17
Pipe water	2,773	2,536	1,118	119	13
Pit	5,762	3,803	3,868	211	96
None	91	49	23	3	19
Other	49	25	18	4	21
<u>Male</u>					
<u>Total</u>	12,667	10,639	7,422	316	140
Flush	6,814	6,574	4,330	87	14
Pipe water	2,203	2,022	888	90	12
Pit	4,750	3,109	3,167	177	83
None	80	43	20	2	19
Other	41	19	14	3	18
<u>Female</u>					
<u>Total</u>	3,003	2,601	1,734	70	19
Flush	1,740	1,683	1,084	18	3
Pipe water	570	514	230	29	1
Pit	1,012	694	701	34	13
None	11	6	3	1	-
Other	8	6	4	1	3
<u>Greater Nuku'alofa</u>					
<u>Total</u>	4,726	4,563	2,013	123	38
Flush	3,648	3,612	1,840	33	8
Pipe water	1,034	959	262	72	6
Pit	250	211	52	30	10
None	16	10	3	1	3
Other	17	8	4	-	10
<u>Male</u>					
<u>Total</u>	3,664	3,528	1,566	94	34
Flush	2,818	2,786	1,430	25	7
Pipe water	802	745	201	54	5
Pit	206	172	47	23	9
None	13	8	2	1	3
Other	15	6	4	-	9
<u>Female</u>					
<u>Total</u>	1,062	1,035	447	29	4
Flush	830	826	410	8	1
Pipe water	232	214	61	18	1
Pit	44	39	5	7	1
None	3	2	1	-	-
Other	2	2	-	-	1

Table H9: Number of households headed by Tongans (including Part-Tongans) by sex of head of household by source of energy for lighting and by source of energy for cooking for Tonga and Greater Nuku'alofa

Source of energy for lighting	Total household	Source of energy for cooking				
		Electricity	Gas	Firewood	Kerosene	Other
<u>TONGA</u>						
<u>Total</u>	15,670	1,608	8,376	11,863	3,747	84
Electricity supply	12,244	1,576	7,905	8,787	2,524	60
Generator	323	57	190	258	102	8
Kerosene	5,835	482	2,050	5,312	2,029	33
Benzine	664	87	291	621	310	11
Solar	394	16	121	339	131	1
Other	307	57	211	256	77	20
<u>MALE</u>						
<u>Total</u>	12,667	1,270	6,687	9,666	2,972	64
Electricity supply	9,758	1,246	6,283	7,039	1,949	47
Generator	286	48	165	232	94	6
Kerosene	4,835	368	1,640	4,426	1,656	24
Benzine	588	75	262	550	279	6
Solar	317	10	98	272	100	1
Other	247	44	165	206	65	16
<u>FEMALE</u>						
<u>Total</u>	3,003	338	1,689	2,197	775	20
Electricity supply	2,486	330	1,622	1,748	575	13
Generator	37	9	25	26	8	2
Kerosene	1,000	114	410	886	373	9
Benzine	76	12	29	71	31	5
Solar	77	6	23	67	31	-
Other	60	13	46	50	12	4
<u>Greater Nuku'alofa</u>						
<u>Total</u>	4,726	489	3,497	2,843	1,049	26
Electricity supply	4,242	475	3,390	2,484	809	16
Generator	61	18	43	40	13	1
Kerosene	1,009	88	548	810	416	6
Benzine	58	2	29	50	31	1
Solar	33	7	31	10	3	-
Other	93	11	69	58	25	3
<u>MALE</u>						
<u>Total</u>	3,664	392	2,718	2,214	779	21
Electricity supply	3,272	379	2,625	1,927	595	12
Generator	55	16	40	37	11	1
Kerosene	783	71	420	629	312	6
Benzine	51	1	28	44	26	-
Solar	28	5	26	9	3	-
Other	79	9	57	52	22	3
<u>FEMALE</u>						
<u>Total</u>	1,062	97	779	629	270	5
Electricity supply	970	96	765	557	214	4
Generator	6	2	3	3	2	-
Kerosene	226	17	128	181	104	-
Benzine	7	1	1	6	5	1
Solar	5	2	5	1	-	-
Other	14	2	12	6	3	-

Table H10: Number of households headed by Tongans (including Part-Tongans) by household asset by sex for division, Nuku'alofa and Greater Nuku'alofa, 1996

Sex/Division	Total household	Radio	Bicycle	Boat	Hot water	Shower	Vehicle	Refrigerator	TV	Video	Computer
<u>TONGA</u>											
<u>Total</u>	15,670	13,858	5,433	938	807	13,259	5,387	7,459	6,286	5,633	225
Tongatapu	10,372	9,358	4,072	441	565	8,960	4,283	5,933	5,688	4,407	211
Vava'u	2,658	2,282	454	245	203	2,109	728	865	368	694	12
Ha'apai	1,448	1,215	541	204	8	1,097	170	344	48	297	1
Eua	812	704	208	19	30	747	175	294	174	213	1
Niuas	380	299	158	29	1	346	31	23	8	22	-
Nuku'alofa	3,386	3,115	1,271	158	298	2,939	1,650	2,323	2,393	1,748	129
Greater Nuku'alofa	4,726	4,296	1,693	221	374	4,040	2,186	2,994	3,131	2,227	165
<u>Male</u>											
<u>Total</u>	12,667	11,236	4,650	841	642	10,703	4,608	5,929	5,070	4,564	187
Tongatapu	8,247	7,458	3,468	398	450	7,116	3,642	4,694	4,569	3,548	177
Vava'u	2,189	1,888	394	213	163	1,735	639	695	310	582	10
Ha'apai	1,183	1,008	464	186	6	892	139	274	41	236	-
Eua	705	611	185	17	22	649	160	246	143	178	-
Niuas	343	271	139	27	1	311	28	20	7	20	-
Nuku'alofa	2,602	2,411	1,046	139	233	2,251	1,363	1,796	1,875	1,364	104
Greater Nuku'alofa	3,664	3,349	1,403	200	292	3,126	1,820	2,324	2,475	1,758	138
<u>Female</u>											
<u>Total</u>	3,003	2,622	783	97	165	2,556	779	1,530	1,216	1,069	38
Tongatapu	2,125	1,900	604	43	115	1,844	641	1,239	1,119	859	34
Vava'u	469	394	60	32	40	374	89	170	58	112	2
Ha'apai	265	207	77	18	2	205	31	70	7	61	1
Eua	107	93	23	2	8	98	15	48	31	35	1
Niuas	37	28	19	2	-	35	3	3	1	2	-
Nuku'alofa	784	704	225	19	65	688	287	527	518	384	25
Greater Nuku'alofa	1,062	947	290	21	82	914	366	670	656	469	27

**Table H11: Number of households headed by Tongans (including Part-Tongans)
by livestock by sex of household by division, Nuku'alofa and Greater Nuku'alofa**

Sex/Division	Total household	Cattle	Horse	Pig	Chicken	Goat
<u>TONGA</u>						
<u>Total</u>	15,670	2,463	2,931	12,764	9,795	1,618
Tongatapu	10,372	1,481	1,130	7,955	5,814	679
Vava'u	2,658	584	779	2,421	1,972	338
Ha'apai	1,448	138	483	1,304	1,106	390
Eua	812	237	352	735	566	147
Niuas	380	23	187	349	337	64
Nuku'alofa	3,386	381	138	2,280	1,479	147
Greater Nuku'alofa	4,726	476	221	3,247	2,233	236
<u>Male</u>						
<u>Total</u>	12,667	2,144	2,521	10,508	8,018	1,373
Tongatapu	8,247	1,302	980	6,468	4,689	569
Vava'u	2,189	501	656	2,009	1,627	286
Ha'apai	1,183	111	404	1,076	912	331
Eua	705	210	311	641	488	128
Niuas	343	20	170	314	302	59
Nuku'alofa	2,602	332	123	1,790	1,151	123
Greater Nuku'alofa	3,664	416	197	2,576	1,756	199
<u>Female</u>						
<u>Total</u>	3,003	319	410	2,256	1,777	245
Tongatapu	2,125	179	150	1,487	1,125	110
Vava'u	469	83	123	412	345	52
Ha'apai	265	27	79	228	194	59
Eua	107	27	41	94	78	19
Niuas	37	3	17	35	35	5
Nuku'alofa	784	49	15	490	328	24
Greater Nuku'alofa	1,062	60	24	671	477	37

Table H12: Number of households headed by Tongans (including Part-Tongans) by sex of head of household by crops grown in year 1996 by division and district

Sex/Division/District	TONGA					MALE					FEMALE				
	Total household	Crops (no squash)	Squash only	Squash and crops	No crops grown	Total household	Crops (no squash)	Squash only	Squash and crops	No crops grown	Total household	Crops (no squash)	Squash only	Squash and crops	No crops grown
TONGA	15,670	10,873	57	1,155	3,585	12,667	9,141	52	1,044	2,430	3,003	1,732	5	111	1,155
TONGATAPU DIVISION	10,372	6,393	46	991	2,942	8,247	5,298	43	894	2,012	2,125	1,095	3	97	930
KOLOFO'OU DISTRICT	2,491	1,108	18	119	1,246	1,922	922	18	104	878	569	186	-	15	368
KOLOMOTU'A DISTRICT	2,235	1,079	7	184	965	1,742	901	7	162	672	493	178	-	22	293
VAINI DISTRICT	1,707	1,222	7	176	302	1,374	1,012	5	158	199	333	210	2	18	103
TATAKAMOTONGA DISTRICT	1,149	921	6	103	119	941	767	6	98	70	208	154	-	5	49
LAPAHA DISTRICT	1,154	852	7	132	163	923	698	7	114	104	231	154	-	18	59
NUKUNUKU DISTRICT	978	721	-	179	78	799	588	-	167	44	179	133	-	12	34
KOLOVAI DISTRICT	658	490	1	98	69	546	410	-	91	45	112	80	1	7	24
VAVA'U DIVISION	2,658	2,178	9	83	388	2,189	1,853	7	76	253	469	325	2	7	135
NEIAFU DISTRICT	964	674	6	33	251	771	570	5	28	168	193	104	1	5	83
PANGAIMOTU DISTRICT	205	181	3	8	13	168	152	2	7	7	37	29	1	1	6
HAHAKE DISTRICT	389	328	-	9	52	332	287	-	9	36	57	41	-	-	16
LEIMATU'A DISTRICT	473	423	-	23	27	379	347	-	22	10	94	76	-	1	17
HIHIFO DISTRICT	371	342	-	10	19	329	305	-	10	14	42	37	-	-	5
MOTU DISTRICT	256	230	-	-	26	210	192	-	-	18	46	38	-	-	8
HA'APAI DIVISION	1,448	1,291	1	1	155	1,183	1,088	1	1	93	265	203	-	-	62
PANGAI DISTRICT	485	400	1	1	83	378	331	1	1	45	107	69	-	-	38
FOA DISTRICT	243	236	-	-	7	205	202	-	-	3	38	34	-	-	4
LULUNGA DISTRICT	237	224	-	-	13	198	187	-	-	11	39	37	-	-	2
MU'OMU'A DISTRICT	147	112	-	-	35	121	98	-	-	23	26	14	-	-	12
HA'ANO DISTRICT	152	143	-	-	9	131	124	-	-	7	21	19	-	-	2
'UIHA DISTRICT	184	176	-	-	8	150	146	-	-	4	34	30	-	-	4
'EUA DIVISION	812	654	1	80	77	705	577	1	73	54	107	77	-	7	23
'EUA PROPER DISTRICT	449	353	1	55	40	392	309	1	50	32	57	44	-	5	8
'EUA FO'OU DISTRICT	363	301	-	25	37	313	268	-	23	22	50	33	-	2	15
NIUAS DIVISION	380	357	-	-	23	343	325	-	-	18	37	32	-	-	5
NIUATOPUTAPU DISTRICT	241	226	-	-	15	214	203	-	-	11	27	23	-	-	4
NIUAFO'OU DISTRICT	139	131	-	-	8	129	122	-	-	7	10	9	-	-	1

Table H13: Number of households headed by Tongans (including Part-Tongans) by sex of head of household by method of waste disposal for division and district, 1996

Sex/Division/District	TOTAL					MALE					FEMALE				
	Total household	Burn	Bury	Lagoon/Ocean	Others	Total household	Burn	Bury	Lagoon/Ocean	Others	Total household	Burn	Bury	Lagoon/Ocean	Others
TONGA	15,670	13,748	673	110	1,139	12,667	11,130	562	97	878	3,003	2,618	111	13	261
TONGATAPU DIVISION	10,372	8,735	459	95	1,083	8,247	6,956	378	82	831	2,125	1,779	81	13	252
KOLOFO'OU DISTRICT	2,491	1,723	125	72	571	1,922	1,317	102	61	442	569	406	23	11	129
KOLOMOTU'A DISTRICT	2,235	1,684	112	7	432	1,742	1,323	88	7	324	493	361	24	-	108
VAINI DISTRICT	1,707	1,550	117	6	34	1,374	1,246	98	5	25	333	304	19	1	9
TATAKAMOTONGA DISTRICT	1,149	1,082	53	2	12	941	883	47	1	10	208	199	6	1	2
LAPAHA DISTRICT	1,154	1,109	22	5	18	923	884	19	5	15	231	225	3	-	3
NUKUNUKU DISTRICT	978	941	25	1	11	799	768	20	1	10	179	173	5	-	1
KOLOVAI DISTRICT	658	646	5	2	5	546	535	4	2	5	112	111	1	-	-
VAVA'U DIVISION	2,658	2,528	79	12	39	2,189	2,072	71	12	34	469	456	8	-	5
NEIAFU DISTRICT	964	921	7	9	27	771	733	6	9	23	193	188	1	-	4
PANGAIMOTU DISTRICT	205	201	4	-	-	168	164	4	-	-	37	37	-	-	-
HAHAKE DISTRICT	389	361	23	-	5	332	307	20	-	5	57	54	3	-	-
LEIMATU'A DISTRICT	473	455	11	2	5	379	363	10	2	4	94	92	1	-	1
HIHIFO DISTRICT	371	336	33	-	2	329	297	30	-	2	42	39	3	-	-
MOTU DISTRICT	256	254	1	1	-	210	208	1	1	-	46	46	-	-	-
HA'APAI DIVISION	1,448	1,336	104	-	8	1,183	1,089	86	-	8	265	247	18	-	-
PANGAI DISTRICT	485	404	75	-	6	378	312	60	-	6	107	92	15	-	-
FOA DISTRICT	243	233	10	-	-	205	196	9	-	-	38	37	1	-	-
LULUNGA DISTRICT	237	232	5	-	-	198	193	5	-	-	39	39	-	-	-
MU'OMU'A DISTRICT	147	143	4	-	-	121	117	4	-	-	26	26	-	-	-
HA'ANO DISTRICT	152	149	3	-	-	131	129	2	-	-	21	20	1	-	-
'UIHA DISTRICT	184	175	7	-	2	150	142	6	-	2	34	33	1	-	-
'EUA DIVISION	812	798	6	2	6	705	694	6	2	3	107	104	-	-	3
'EUA PROPER DISTRICT	449	442	4	1	2	392	386	4	1	1	57	56	-	-	1
'EUA FO'OU DISTRICT	363	356	2	1	4	313	308	2	1	2	50	48	-	-	2
NIUAS DIVISION	380	351	25	1	3	343	319	21	1	2	37	32	4	-	1
NIUATOPUTAPU DISTRICT	241	226	11	1	3	214	203	8	1	2	27	23	3	-	1
NIUAFO'OU DISTRICT	139	125	14	-	-	129	116	13	-	-	10	9	1	-	-