

PREFACE

This is the fourteenth bulletin in a series of migration reports produced by the Statistics Department as the main reference on volume of overseas visitors, cruise ship passengers, yacht passengers and residents movement to and from the Kingdom of Tonga. This bulletin covers the period from January to December 2013. Included are tables providing a monthly breakdown of the data.

The data is extracted from the arrival and departure cards of the Immigration Department, Ministry of Foreign Affairs, and Customs Department's vessel & yacht log book.

This bulletin presents information relating to number of arrivals and departures by port, passenger's type, transport mode, gender, age group, purpose of travel and country of usual residence.

Special thanks are extended to the Immigration Department of the ministry of Foreign Affairs, Customs Department of the Ministry of Revenue Services, Airport Terminal Services, Tonga Airports Limited and Ports Authority for their assistance in providing their administrative information relating to these statistics. I am also grateful particularly to my staff in the Population and Social Statistics Division who contributed to the compilation of this report.

Any suggestions that recipients of this bulletin wish to make for its future improvement will be welcome by the Statistics Department.

.....
Mr. 'Ata'ata M. Finau
Government Statistician

Statistics Department ,
P.O.Box 149,
Nuku'alofa,
Tonga .

Telephone : (676) 23 – 300
Fax : (676) 24 – 303
Email : dept@stats.gov.to
Website : www.spc.int/prism/tonga/

TABLE OF CONTENTS

PREFACE.....	1
TABLE OF CONTENTS	2
LIST OF FIGURES.....	3
LIST OF TABLES.....	3
LIST OF STATISTICAL TABLES FOR YEAR 2013.....	3
1. MAIN FEATURES.....	4
1.1 GENERAL.....	4
1.2 TOTAL INTERNATIONAL ARRIVALS AND DEPARTURES.....	4
1.3 TOTAL INTERNATIONAL ARRIVALS AND DEPARTURES BY ANNUAL PERCENTAGE CHANGE 5	5
2. INTERNATIONAL ARRIVALS.....	6
2.1 INTERNATIONAL ARRIVALS BY TRANSPORT MODE 2004 - 2013.....	6
2.2 TOTAL ARRIVALS BY TRANSPORT MODE AND MONTH 2013.....	6
2.3 TOTAL AIR ARRIVALS BY PASSENGER TYPE AND MONTH 2013.....	7
2.4 TOTAL AIR VISITORS BY COUNTRY OF USUAL RESIDENCE 2013.....	7
2.5 VISITORS ARRIVALS BY PURPOSE OF VISIT 2013.....	8
2.6 INTERNATIONAL AIR VISITORS BY AGE GROUP 2013.....	8
3. INTERNATIONAL DEPARTURES.....	9
3.1 AIR DEPARTURES BY GENDER AND MONTH 2013.....	9
3.2 AIR DEPARTURES BY COUNTRY OF USUAL RESIDENCE, 2013.....	9
4. EXPLANATORY NOTES.....	10
4.1 PURPOSE.....	10
4.2 COVERAGE.....	10
4.3 SOURCE OF DATA.....	10
4.4 DATA LIMITATIONS.....	10
5. GLOSSARY.....	11

LIST OF FIGURES

Figure 1: Total International Arrivals and Departures 2004 – 2013	4
Figure 2: International Arrivals by Transport Mode 2004 – 2013	6
Figure 3: Monthly Arrivals by Mode of Transport 2013	7
Figure 4: Total Air Arrivals by Passenger Type 2013	7
Figure 5: Total Air Visitors by Country of Usual Residence 2013	8
Figure 6: Visitors by Purpose of Visit 2013	8
Figure 7: Visitors by Age Group 2013	9
Figure 8: Total Departures by Gender and Month 2013	10
Figure 9: Departures by Country of Usual Residence 2013	10

LIST OF TABLES

Table 1.1: Total international Arrivals and Departures by Annual Percentage Change	5
------------------------------------------------------------------------------------	---

LIST OF STATISTICAL TABLES FOR YEAR 2013

Table 1: Monthly Arrival and Departure by Mode of Travel and Net Migration, 2010 - 2013	13
Table 2: Arrivals by Age group, Passenger Type, Gender and month 2013	14
Table 3: Air Visitors by Country of Residence and Purpose of Visit, 2013	14
Table 4: Total Air Arrivals by Country of Residence and Purpose of Visit, 2013	15
Table 5: Air Departures by Age Group and Passengers Type for the year 2013	15
Table 6: Total Departures by Country of Residence and Gender for the year 2013	16

1. MAIN FEATURES

1.1 GENERAL

- a. Net overseas migration is one component of population change used to estimate the Tonga usually resident population, as are births and deaths.
- b. Individuals are considered to be residents when they reside in Tonga for at least one year
- c. Due to the limitation on the data collected we are unable at this stage to determine whether arrivals and departures are of a long term or short term duration.
- d. For 2013, total international arrivals were 85,473 and total departures were 85,134, a net outflow of 339
- e. This means that there are more persons arriving the Kingdom than persons departing for the year 2013

1.2 TOTAL INTERNATIONAL ARRIVALS AND DEPARTURES

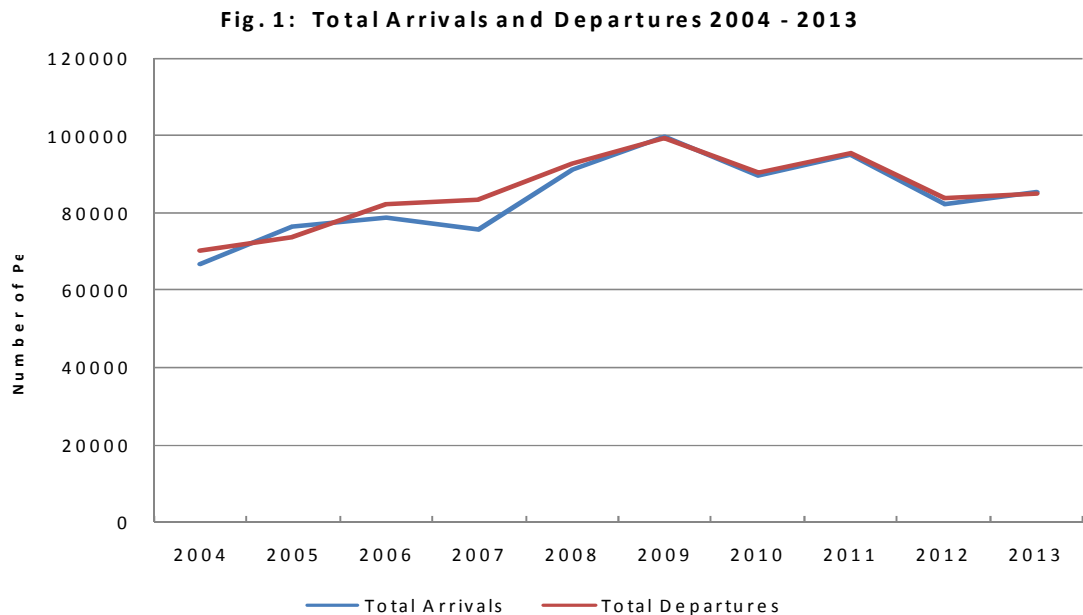


Fig 1. Shows the Total Arrivals and Departures to and from the Kingdom of Tonga for the years 2004 to 2013. The above diagram shows a slightly upward trend from 2004 to 2009 and both declined in 2010, increased again in 2011 and again declined in 2012. In the year 2013 there were more people arriving the Kingdom than departing.

1.3 TOTAL INTERNATIONAL ARRIVALS AND DEPARTURES BY ANNUAL PERCENTAGE CHANGE

Table 1.1 Total International Arrivals and Departures 2004- 2013

Year	Total Arrivals	%Change	Total Departures	%Change
2004	66,639	-	70,206	-
2005	76,286	14.5	73,540	4.7
2006	78,652	3.1	82,268	11.9
2007	75,587	-3.9	83,416	1.4
2008	91,128	20.6	92,890	11.4
2009	99,803	9.5	99,360	7.0
2010	89,506	-10.3	90,607	-8.8
2011	94,960	6.1	95,607	5.5
2012	82,400	-13.2	83,805	-12.3
2013	85,473	3.7	85,134	1.6

Table 1 shows the total arrivals with the highest point in 2009 with 99,803 persons arriving in the Kingdom. The largest increase in arrivals in 2008 was 20.6% from 2007. In 2013, there was an increase of 3.7% from 2012. Similarly to total arrivals, total departures had the highest point in 2009 with 99,360 persons leaving Tonga. There was an increase on departures of 1.6% from 2012.

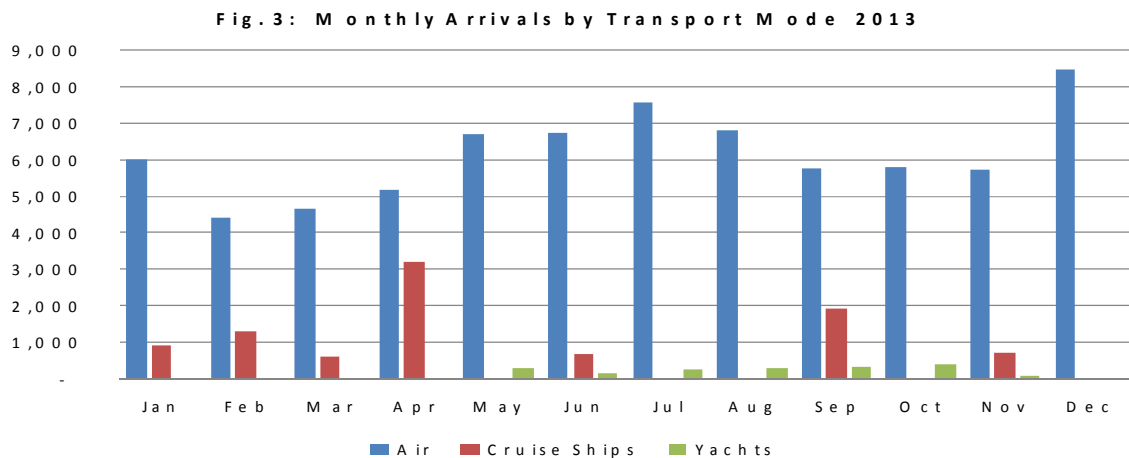
2. INTERNATIONAL ARRIVALS

2.1 INTERNATIONAL ARRIVALS BY TRANSPORT MODE 2004 - 2013



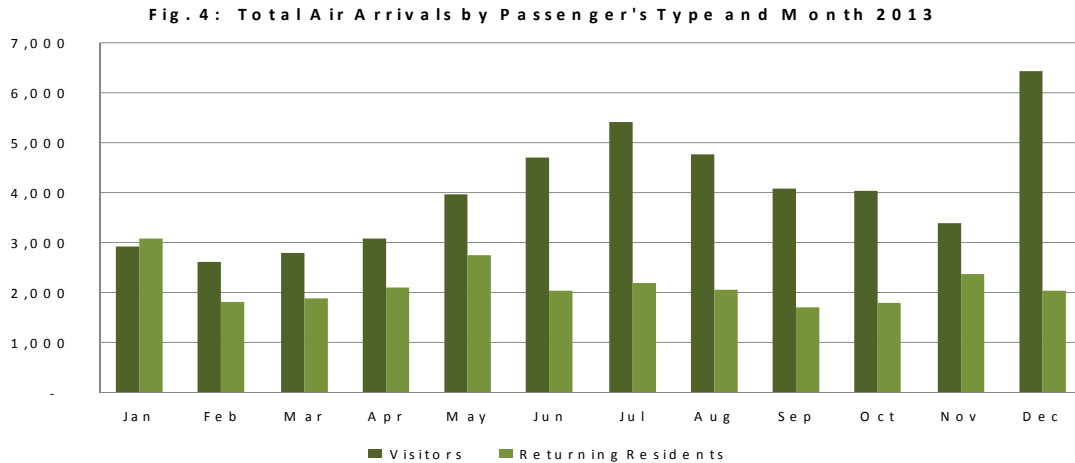
The above graph shows the total international arrivals to the Kingdom by transport mode for the year 2004 - 2013. It clearly shows that international air arrivals dominated the total international arrivals to the Kingdom followed by arrivals on cruise ships and then arrivals by yachts. The increased of total arrivals in 2009 and 2011 is mainly due to the increase in arrivals by cruise ships which was 27,641 in 2009 compared to 14,599 in 2008 and 20,519 in 2011 compared with 16,265 in 2010. Yachts arrivals increased from 1,816 in 2012 to 2,045 in 2013.

2.2 TOTAL ARRIVALS BY TRANSPORT MODE AND MONTH 2013



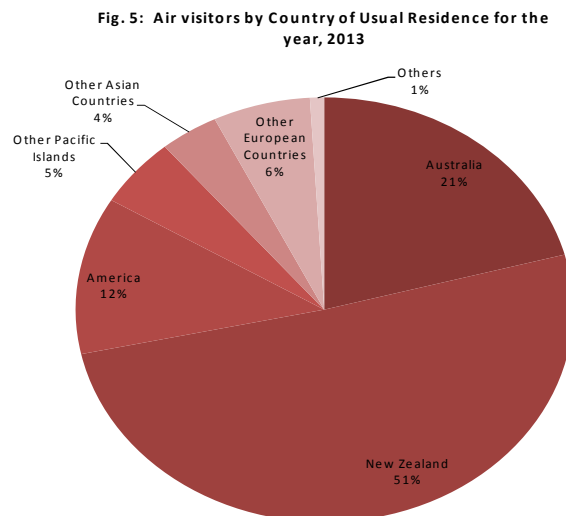
The above graph illustrates the total arrivals by transport mode and month for the year 2013. The air arrivals were highest in December (8,477) followed by July (7,598). Cruise ships visited the Kingdom in the month of January, February, March, April, June, September and November with the highest number of cruise ship arrivals was in April (3,205) followed by September (1,954)

2.3 TOTAL AIR ARRIVALS BY PASSENGER TYPE AND MONTH 2013



The highest number of returning residents arrived in Tonga was in January 2013. Visitors arrivals had the highest in December with Tongans residing overseas visiting Tonga for Christmas Holidays.

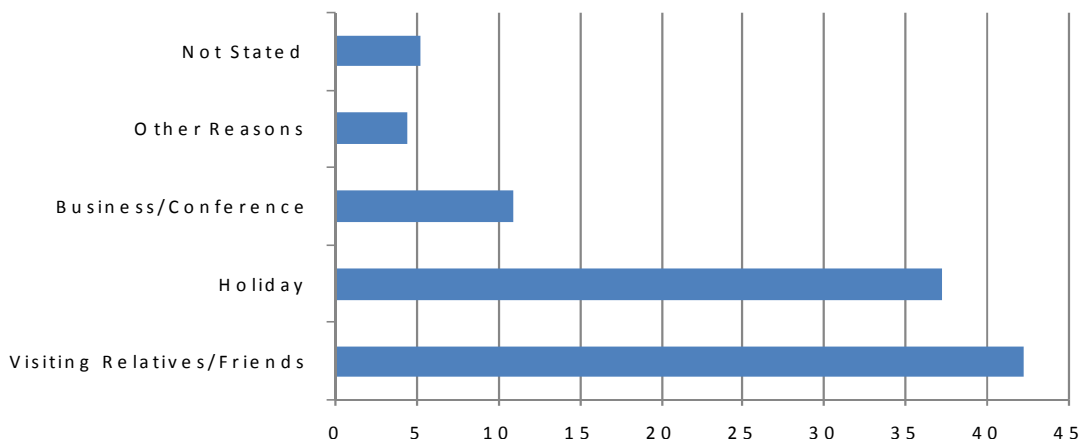
2.4 TOTAL AIR VISITORS BY COUNTRY OF USUAL RESIDENCE 2013



New Zealand remains as the leading country in visitors arrivals by country of usual residence accounting for 51% (24,476). This was followed by Australia with 21% (10,041) and the United States 12% (5,789)

2.5 VISITORS ARRIVALS BY PURPOSE OF VISIT 2013

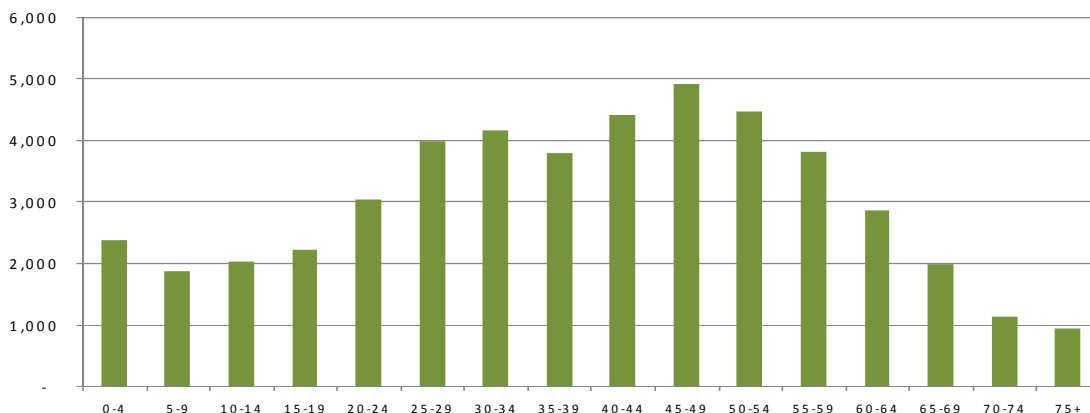
Fig. 6: Air Visitors by Purpose of Visit for the year, 2013



Most visitors to the Kingdom were visiting relatives and friends 42.2% (20,332). This was followed by 37.2% (17,909) who were here on Holiday/Vacation

2.6 INTERNATIONAL AIR VISITORS BY AGE GROUP 2013

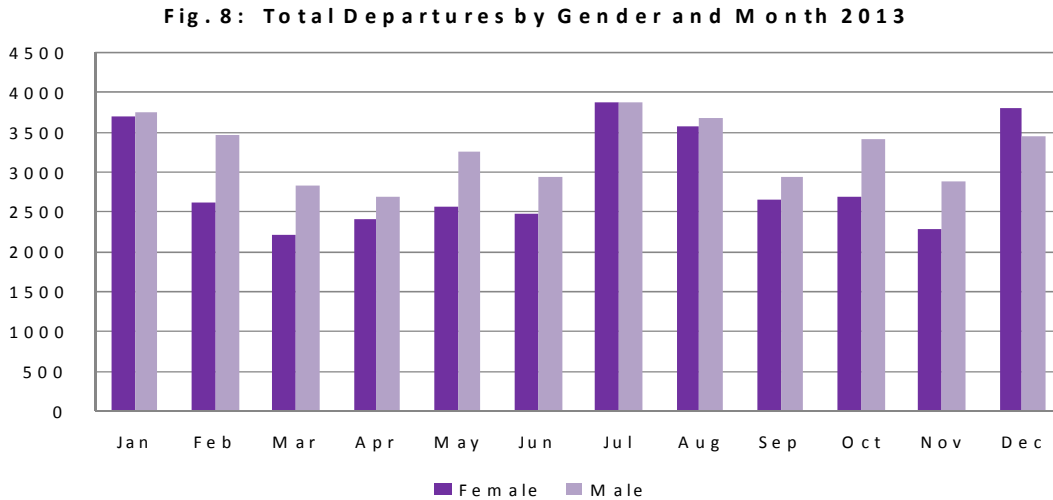
Fig. 7: Air Visitors by Age Group - 2013



The majority of the air visitors were in the 45 – 49 (4,924) age group followed by 50 – 54 (4,481) age group

3. INTERNATIONAL DEPARTURES

3.1 AIR DEPARTURES BY GENDER AND MONTH 2013



The above figure shows that the lowest departures for female was in the month of March followed by November. The highest number of departures was in the month of July with almost the same numbers 3,872 for males and 3,875 for females.

3.2 AIR DEPARTURES BY COUNTRY OF USUAL RESIDENCE, 2013

Fig. 9: Air Departures by Country of Usual Residence for the year 2013

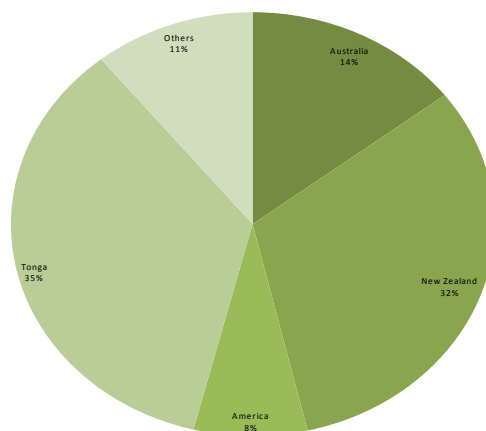


Figure 9 shows that most of the persons departing in the year 2013 were persons residing in the Kingdom of Tonga 26,100 (35.3)% followed by New Zealand 23,484 (31.8)% and Australia 10,773 (14.6)

4. EXPLANATORY NOTES

4.1 PURPOSE

The purpose of this bulletin is to give an overview of total international arrivals and departures and their main social and economic characteristics.

Statistics on Overseas Arrivals and Departures related to the number of movements of travelers rather than the number of travelers (i.e. the multiple movements of individual persons during a given reference period are all counted).

4.2 COVERAGE

This bulletin covers all international arrivals and departures from the Kingdom of Tonga, including yachts and those through Lupepau'u Airport and all outer islands, during 2013. Final totals of arrivals and departures are based on the reconciliation between the Ministry of Foreign Affairs and Immigration Electronic data, Customs Wharf Register and Air Terminal Services Manifest.

4.3 SOURCE OF DATA

Data is extracted from the arrival and departure cards of the Immigration Department, Ministry of Foreign Affairs, and Customs vessel and yacht log book. The Statistics Department reconciles the figures from the Air Terminal Services Manifest and Ports Authority Manifest to produce final published data.

4.4 DATA LIMITATIONS

Passengers on yachts and ships do not complete arrival and departure cards therefore we are unable to provide details on Age, Sex and Purpose of visit.

Due to the limitation on data collected, we are unable at this stage to determine whether arrivals and departures are of a long term or short term duration.

5. GLOSSARY

- A Visitor is a person other than a Tongan citizen, permit holder and exempted person, who usually stays at least 24 hours in the kingdom, or who stays overnight in accommodation within Tonga. This refers to passengers arriving by air and yacht only.
- Cruise Ship Passengers are defined as those who arrive and depart in the same vessel which is a cruise trip, and use that vessel's accommodation during their stay in Tonga. They are also known as "Excursionist"
- A Returning Resident is a person who has the Kingdom of Tonga as their permanent address for more than six months of the year and returns to Tonga after a trip overseas. Tongan residence is self-defined as reported by travelers when completing the Passenger Arrival Card.
- Main reason for journey on arrival in Tonga, all overseas visitors and Tongan residents are asked to state their purpose of journey. Statistics are published using the following categories: Holiday, Business, Visiting friends and /or relatives, Conference and Others.
- Mode of Transport Only air, yacht and cruise ships passengers are included. Passenger/crew on cargo, navy or special vessels are excluded.

The Statistics Department wishes to acknowledge the cooperation of the Immigration Department of the Ministry of Foreign Affairs and Trade and the Custom Department of the Ministry of Revenue Services, Air Terminal Services, and Ports Authority making it possible to publish these important statistics.

Table 2. Total Air Arrivals by Age Group and Month 2013

Age Group	Jan	Feb	Mar	Apr	May	Jun	Jul	Aug	Sep	Oct	Nov	Dec	Total
0-4	294	216	201	244	293	273	263	277	185	272	277	581	3,376
5-9	391	173	145	186	200	205	321	174	152	204	185	499	2,835
10-14	427	160	117	180	161	171	323	152	244	191	201	587	2,914
15-19	521	284	140	162	189	318	486	180	280	206	297	608	3,671
20-24	436	336	362	325	564	539	569	454	400	408	501	660	5,554
25-29	510	373	452	477	687	624	614	656	559	517	544	738	6,751
30-34	535	364	469	437	661	573	646	657	598	546	490	612	6,588
35-39	457	354	419	464	616	569	563	634	536	523	466	637	6,238
40-44	504	395	494	498	585	628	729	651	594	555	508	740	6,881
45-49	468	431	480	519	635	630	798	711	576	617	553	786	7,204
50-54	407	363	405	468	588	543	707	667	516	526	464	629	6,283
55-59	347	340	353	400	542	508	589	552	399	479	416	518	5,443
60-64	268	255	234	302	382	462	430	415	307	338	320	372	4,085
65-69	211	187	172	242	288	331	264	315	218	212	248	224	2,912
70-74	132	108	132	141	172	202	156	154	120	126	134	146	1,723
75+	104	98	102	139	142	163	140	155	95	106	154	140	1,538
Total	6,012	4,437	4,677	5,184	6,705	6,739	7,598	6,804	5,779	5,826	5,758	8,477	73,996
% Distribution	8.1	6.0	6.3	7.0	9.1	9.1	10.3	9.2	7.8	7.9	7.8	11.5	100.0
GENDER													
Male	3,042	2,348	2,545	2,806	3,981	3,495	3,974	3,621	3,215	3,163	3,148	4,341	39,679
Female	2,970	2,089	2,132	2,378	2,724	3,244	3,624	3,183	2,564	2,663	2,610	4,136	34,317
Total	6,012	4,437	4,677	5,184	6,705	6,739	7,598	6,804	5,779	5,826	5,758	8,477	73,996
PASSENGERS TYPE													
Returning Residents	3,085	1,816	1,880	2,096	2,740	2,046	2,183	2,051	1,711	1,789	2,363	2,048	25,808
Visitors	2,927	2,621	2,797	3,088	3,965	4,693	5,415	4,753	4,068	4,037	3,395	6,429	48,188
Total	6,012	4,437	4,677	5,184	6,705	6,739	7,598	6,804	5,779	5,826	5,758	8,477	73,996

Table 3: Air Visitors by Country of Residence and Purpose of Visit, 2013

Country of Usual Residence	Purpose of Visit						
	Total	% Distribution	Holiday/Vacation	Business/Conference	Visiting Relative/Friends	Other Reasons	Not Stated
Australia	10,041	20.8	3,796	903	4,400	456	486
New Zealand	24,476	50.8	8,571	1,900	11,761	810	1,434
Fiji	1,587	3.3	221	678	404	160	124
American Samoa	12	0.0	1	-	4	3	4
Western Samoa	246	0.5	42	123	61	9	11
Other Pacific Islands	706	1.5	90	416	114	66	20
Japan	630	1.3	282	118	108	91	31
China	600	1.2	184	175	119	86	36
India	45	0.1	7	16	9	9	4
Korea	115	0.2	63	19	25	5	3
Other Asian Countries	451	0.9	208	138	65	25	15
UK	703	1.5	491	72	86	27	27
Germany	794	1.6	654	23	69	21	27
France	315	0.7	158	80	40	36	1
Italy	145	0.3	124	7	13	-	1
Other European Countries	1,089	2.3	929	50	81	11	18
All African Countries	34	0.1	24	4	4	2	-
United States of America	5,789	12.0	1,819	469	2,894	329	278
Canada	241	0.5	175	23	32	7	4
Other American Countries	169	0.4	70	28	43	11	17
Total	48,188	100.0	17,909	5,242	20,332	2,164	2,541
Percent Distribution	100.0		37.2	10.9	42.2	4.5	5.3

Table 4: Total Air Arrivals by Country of Residence and Purpose of Visit, 2013

Country of Usual Residence	Purpose of Visit						
	Total	% Distribution	Holiday/Vacation	Business/Conference	Visiting Relatives/Friends	Other Reasons	Not Stated
Australia	10,041	13.6	3,796	903	4,400	456	486
New Zealand	24,476	33.1	8,571	1,900	11,761	810	1,434
Fiji	1,587	2.1	221	678	404	160	124
American Samoa	12	0.0	1	-	4	3	4
Western Samoa	246	0.3	42	123	61	9	11
Tonga	25,808	34.9	667	185	1,010	184	23,762
Other Pacific Islands	706	1.0	90	416	114	66	20
Japan	630	0.9	282	118	108	91	31
China	600	0.8	184	175	119	86	36
India	45	0.1	7	16	9	9	4
Korea	115	0.2	63	19	25	5	3
Other Asian Countries	451	0.6	208	138	65	25	15
UK	703	1.0	491	72	86	27	27
Germany	794	1.1	654	23	69	21	27
France	315	0.4	158	80	40	36	1
Italy	145	0.2	124	7	13	-	1
Other European Countries	1,089	1.5	929	50	81	11	18
All African Countries	34	0.0	24	4	4	2	-
United States of America	5,789	7.8	1,819	469	2,894	329	278
Canada	241	0.3	175	23	32	7	4
Other American Countries	169	0.2	70	28	43	11	17
Total	73,996	100.0	18,576	5,427	21,342	2,348	26,303
% Distribution	100.0		25.1	7.3	28.8	3.2	35.5

Table 5: AIR DEPARTURES by Age Group and Passenger's Type for the year 2013

Age Group	Departing Residents	Percent Distribution	Visitors	Percent Distribution	Total	Percent Distribution
0 - 4	996	1.3	2,482	3.4	3,478	4.7
5 - 9	965	1.3	1,941	2.6	2,906	3.9
10 - 14	893	1.2	1,962	2.7	2,855	3.9
15 - 19	1,536	2.1	2,354	3.2	3,890	5.3
20 - 24	2,811	3.8	3,385	4.6	6,196	8.4
25 - 29	2,878	3.9	3,899	5.3	6,777	9.2
30 - 34	2,492	3.4	4,108	5.6	6,600	8.9
35 - 39	2,388	3.2	3,731	5.0	6,119	8.3
40 - 44	2,424	3.3	4,241	5.7	6,665	9.0
45 - 49	2,225	3.0	4,762	6.4	6,987	9.4
50 - 54	1,721	2.3	4,337	5.9	6,058	8.2
55 - 59	1,581	2.1	3,734	5.1	5,315	7.2
60 - 64	1,204	1.6	2,827	3.8	4,031	5.5
65 - 69	896	1.2	2,038	2.8	2,934	4.0
70 - 74	576	0.8	1,099	1.5	1,675	2.3
75+	512	0.7	940	1.3	1,452	2.0
All Ages	26,098	35.3	47,840	64.7	73,938	100.0
YACHT	-	-	1,769	0	1,769	0
CRUISE SHIP	-	-	9,427	0	9,427	0
Total	26,098	35.3	59,036	64.7	85,134	100.0

Table 6. Total Departures by Country of Residence and Gender for the year 2013

Country of Usual Residence	Male	Percent	Female	Percent	Total	Percent
	No.	Distribution	No.	Distribution	No.	Distribution
Australia	5,345	7.2	5,428	7.3	10,773	14.6
New Zealand	11,532	15.6	11,952	16.2	23,484	31.8
Fiji	1,014	1.4	593	0.8	1,607	2.2
American Samoa	60	0.1	39	0.1	99	0.1
Western Samoa	148	0.2	86	0.1	234	0.3
Tonga	14,645	19.8	11,455	15.5	26,100	35.3
Other Pacific Islands	484	0.7	232	0.3	716	1.0
Japan	395	0.5	214	0.3	609	0.8
China	378	0.5	200	0.3	578	0.8
India	26	0.0	5	0.0	31	0.0
Korea	71	0.1	32	0.0	103	0.1
Other Asian Countries	304	0.4	153	0.2	457	0.6
UK	387	0.5	331	0.4	718	1.0
Germany	395	0.5	405	0.5	800	1.1
France	223	0.3	112	0.2	335	0.5
Italy	72	0.1	61	0.1	133	0.2
Other European Countries	629	0.9	508	0.7	1,137	1.5
All African Countries	28	0.0	15	0.0	43	0.1
United States of America	2,776	3.8	2,815	3.8	5,591	7.6
Canada	130	0.2	126	0.2	256	0.3
Other American Countries	65	0.1	69	0.1	134	0.2
Total	39,107	52.9	34,831	47.1	73,938	100.0